

Anti-DSC3 antibody

Cat. No.	ml263704
Package	25 µl/100 µl/200 µl
Storage	-20°C, pH7.4 PBS, 0.05% NaN ₃ , 40% Glycerol

Product overview

Description	Anti-DSC3 rabbit polyclonal antibody
Applications	ELISA, IHC
Immunogen	Synthetic peptide of human DSC3
Reactivity	Human, Mouse
Content	0.66 mg/ml
Host species	Rabbit
Ig class	Immunogen-specific rabbit IgG
Purification	Antigen affinity purification

Target information

Symbol	DSC3
Full name	desmocollin 3
Synonyms	DSC; DSC1; DSC2; DSC4; CDHF3; HT-CP
Swissprot	Q14574

Target Background

The protein encoded by this gene is a calcium-dependent glycoprotein that is a member of the desmocollin subfamily of the cadherin superfamily. These desmosomal family members, along with the desmogleins, are found primarily in epithelial cells where they constitute the adhesive proteins of the desmosome cell-cell junction and are required for cell adhesion and desmosome formation. The desmosomal family members are arranged in two clusters on chromosome 18, occupying less than 650 kb combined. Mutations in this gene are a cause of hypotrichosis and recurrent skin vesicles disorder. The protein can act as an autoantigen in pemphigus diseases, and it is also considered to be a biomarker for some cancers. Alternative splicing of this gene results in multiple transcript variants.

订购热线: 4008-898-798

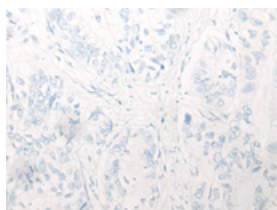
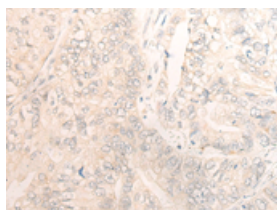
Applications

Immunohistochemistry

Predicted cell location: Cell membrane

Positive control: Human gastric cancer

Recommended dilution: 20-100

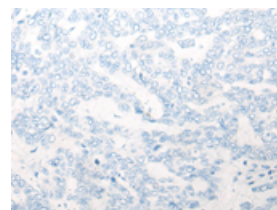
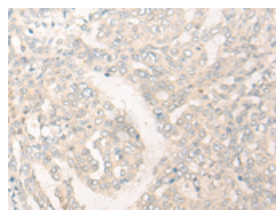


The image on the left is immunohistochemistry of paraffin-embedded Human gastric cancer tissue using ml263704(DSC3 Antibody) at dilution 1/20, on the right is treated with synthetic peptide. (Original magnification: $\times 200$)

Predicted cell location: Cell membrane

Positive control: Human liver cancer

Recommended dilution: 20-100



The image on the left is immunohistochemistry of paraffin-embedded Human liver cancer tissue using ml263704(DSC3 Antibody) at dilution 1/20, on the right is treated with synthetic peptide. (Original magnification: $\times 200$)

ELISA

Recommended dilution: 5000-10000

联系电话: 4008-898-798, 021-61725725

联系QQ: 2881505695, 2881505696

邮箱: mlbio_cn@yeah.net

网址: www.mlbio.cn