

Anti-EIF3B antibody

Cat. No.	ml263769
Package	25 µl/100 µl/200 µl
Storage	-20°C, pH7.4 PBS, 0.05% NaN ₃ , 40% Glycerol

Product overview

Description	Anti-EIF3B rabbit polyclonal antibody
Applications	ELISA, IHC
Immunogen	Synthetic peptide of human EIF3B
Reactivity	Human, Mouse, Rat
Content	0.66 mg/ml
Host species	Rabbit
Ig class	Immunogen-specific rabbit IgG
Purification	Antigen affinity purification

Target information

Symbol	EIF3B
Full name	eukaryotic translation initiation factor 3 subunit B
Synonyms	PRT1; EIF3S9; EIF3-ETA; EIF3-P110; EIF3-P116
Swissprot	P55884

Target Background

Eukaryotic initiation factor 3 subunit B (eIF3B) is one of at least 13 non-identical protein subunits of eukaryotic initiation factor 3 (eIF3). eIF3 is the largest eIF (~650 kDa) and functions to facilitate binding of the 40S ribosomal subunit to the 5'-end of cellular mRNAs near the cap structure (m⁷GpppN). eIF3B is a conserved subunit and part of the functional core of eIF3. It bears a non-canonical RNA recognition motif (RRM) and interacts directly with the eIF3S1 subunit.

订购热线: 4008-898-798

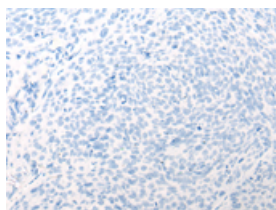
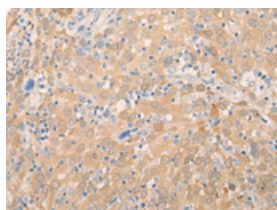
Applications

Immunohistochemistry

Predicted cell location: Cytoplasm

Positive control: Human cervical cancer

Recommended dilution: 30-150

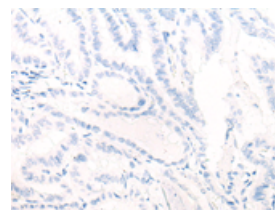
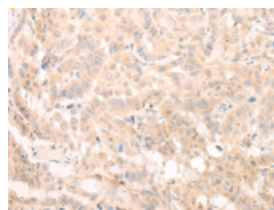


The image on the left is immunohistochemistry of paraffin-embedded Human cervical cancer tissue using ml263769(EIF3B Antibody) at dilution 1/20, on the right is treated with synthetic peptide. (Original magnification: ×200)

Predicted cell location: Cytoplasm

Positive control: Human thyroid cancer

Recommended dilution: 30-150



The image on the left is immunohistochemistry of paraffin-embedded Human thyroid cancer tissue using ml263769(EIF3B Antibody) at dilution 1/20, on the right is treated with synthetic peptide. (Original magnification: ×200)

ELISA

Recommended dilution: 5000-10000

联系电话: 4008-898-798, 021-61725725

联系QQ: 2881505695, 2881505696

邮箱: mlbio_cn@yeah.net

网址: www.mlbio.cn