

Anti-TMEM45A antibody

Cat. No.	ml263782
Package	25 µl/100 µl/200 µl
Storage	-20°C, pH7.4 PBS, 0.05% NaN ₃ , 40% Glycerol

Product overview

Description	Anti-TMEM45A rabbit polyclonal antibody
Applications	ELISA, IHC
Immunogen	Synthetic peptide of human TMEM45A
Reactivity	Human
Content	0.54 mg/ml
Host species	Rabbit
Ig class	Immunogen-specific rabbit IgG
Purification	Antigen affinity purification

Target information

Symbol	TMEM45A
Full name	transmembrane protein 45A
Synonyms	DERP7; DNAPTP4
Swissprot	Q9NWC5

Target Background

High expression and prognostic value of TMEM45A has been recently reported in various types of human tumors. High levels of TMEM45A expression in tumors may be indicative of potential resistance to cancer therapy, making TMEM45A an interesting biomarker for resistance.

订购热线: 4008-898-798

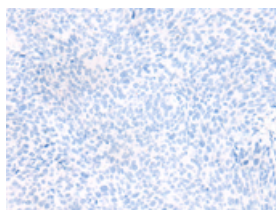
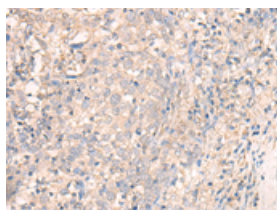
Applications

Immunohistochemistry

Predicted cell location: Cytoplasm and Cell membrane

Positive control: Human cervical cancer

Recommended dilution: 25-100

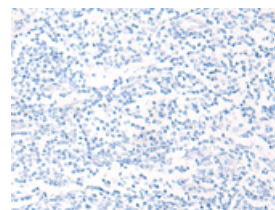
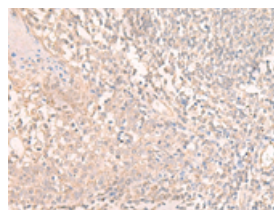


The image on the left is immunohistochemistry of paraffin-embedded Human cervical cancer tissue using ml263782(TMEM45A Antibody) at dilution 1/20, on the right is treated with synthetic peptide. (Original magnification: $\times 200$)

Predicted cell location: Cytoplasm and Cell membrane

Positive control: Human tonsil

Recommended dilution: 25-100



The image on the left is immunohistochemistry of paraffin-embedded Human tonsil tissue using ml263782(TMEM45A Antibody) at dilution 1/20, on the right is treated with synthetic peptide. (Original magnification: $\times 200$)

ELISA

Recommended dilution: 5000-10000

联系电话: 4008-898-798, 021-61725725

联系QQ: 2881505695, 2881505696

邮箱: mlbio_cn@yeah.net

网址: www.mlbio.cn