

Anti-EPS15 antibody

| | |
|-----------------|---|
| Cat. No. | ml263826 |
| Package | 25 µl/100 µl/200 µl |
| Storage | -20°C, pH7.4 PBS, 0.05% NaN ₃ , 40% Glycerol |

Product overview

| | |
|---------------------|---------------------------------------|
| Description | Anti-EPS15 rabbit polyclonal antibody |
| Applications | ELISA, IHC |
| Immunogen | Synthetic peptide of human EPS15 |
| Reactivity | Human, Mouse |
| Content | 1.02 mg/ml |
| Host species | Rabbit |
| Ig class | Immunogen-specific rabbit IgG |
| Purification | Antigen affinity purification |

Target information

| | |
|------------------|---|
| Symbol | EPS15 |
| Full name | epidermal growth factor receptor pathway substrate 15 |
| Synonyms | AF1P; AF-1P; MLLT5 |
| Swissprot | P42566 |

Target Background

This gene encodes a protein that is part of the EGFR pathway. The protein is present at clathrin-coated pits and is involved in receptor-mediated endocytosis of EGF. Notably, this gene is rearranged with the HRX/ALL/MLL gene in acute myelogenous leukemias. Alternative splicing results in multiple transcript variants encoding distinct isoforms.

订购热线: 4008-898-798

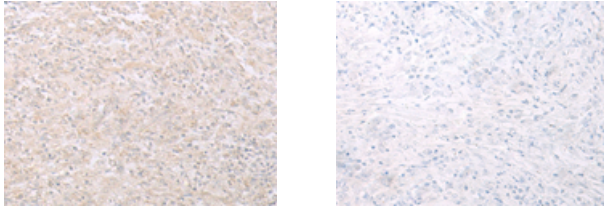
Applications

Immunohistochemistry

Predicted cell location: Cell membrane and Cytoplasm

Positive control: Human liver cancer

Recommended dilution: 30-150



The image on the left is immunohistochemistry of paraffin-embedded Human liver cancer tissue using ml263826(EPS15 Antibody) at dilution 1/35, on the right is treated with synthetic peptide. (Original magnification: $\times 200$)

ELISA

Recommended dilution: 5000-10000

联系电话: 4008-898-798, 021-61725725

联系QQ: 2881505695, 2881505696

邮箱: mlbio_cn@yeah.net

网址: www.mlbio.cn