

Anti-FAM155B antibody

Cat. No.	ml263874
Package	25 µl/100 µl/200 µl
Storage	-20°C, pH7.4 PBS, 0.05% NaN ₃ , 40% Glycerol

Product overview

Description	Anti-FAM155B rabbit polyclonal antibody
Applications	ELISA, IHC
Immunogen	Synthetic peptide of human FAM155B
Reactivity	Human
Content	0.84 mg/ml
Host species	Rabbit
Ig class	Immunogen-specific rabbit IgG
Purification	Antigen affinity purification

Target information

Symbol	FAM155B
Full name	family with sequence similarity 155 member B
Synonyms	TED; TMEM28; CXorf63; bB57D9.1
Swissprot	O75949

Target Background

This gene encodes a product belonging to a family of proteins with unknown function. The presence of two transmembrane domains suggests that this protein is a multi-pass membrane protein.

订购热线: 4008-898-798

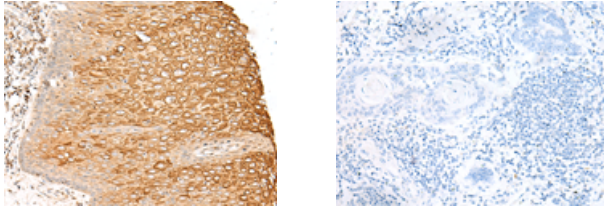
Applications

Immunohistochemistry

Predicted cell location: Cell membrane

Positive control: Human esophagus cancer

Recommended dilution: 40-200



The image on the left is immunohistochemistry of paraffin-embedded Human esophagus cancer tissue using ml263874(FAM155B Antibody) at dilution 1/30, on the right is treated with synthetic peptide. (Original magnification: ×200)

ELISA

Recommended dilution: 5000-10000

联系电话: 4008-898-798, 021-61725725

联系QQ: 2881505695, 2881505696

邮箱: mlbio_cn@yeah.net

网址: www.mlbio.cn