

## Anti-PIEZO2 antibody

<b>Cat. No.</b>	ml263878
<b>Package</b>	25 µl/100 µl/200 µl
<b>Storage</b>	-20°C, pH7.4 PBS, 0.05% NaN <sub>3</sub> , 40% Glycerol

### Product overview

<b>Description</b>	Anti-PIEZO2 rabbit polyclonal antibody
<b>Applications</b>	ELISA, IHC
<b>Immunogen</b>	Synthetic peptide of human PIEZO2
<b>Reactivity</b>	Human, Mouse
<b>Content</b>	0.96 mg/ml
<b>Host species</b>	Rabbit
<b>Ig class</b>	Immunogen-specific rabbit IgG
<b>Purification</b>	Antigen affinity purification

### Target information

<b>Symbol</b>	PIEZO2
<b>Full name</b>	piezo type mechanosensitive ion channel component 2
<b>Synonyms</b>	DA3; DA5; MWKS; DAIP; FAM38B; HsT748; HsT771; FAM38B2; C18orf30; C18orf58
<b>Swissprot</b>	Q9H5I5

### Target Background

The protein encoded by this gene contains more than thirty transmembrane domains and likely functions as part of mechanically-activated (MA) cation channels. These channels serve to connect mechanical forces to biological signals. The encoded protein quickly adapts MA currents in somatosensory neurons. Defects in this gene are a cause of type 5 distal arthrogryposis. Several alternatively spliced transcript variants of this gene have been described, but their full-length nature is not known.

订购热线: 4008-898-798

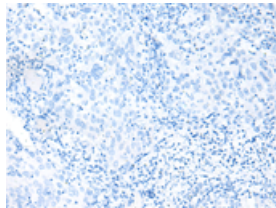
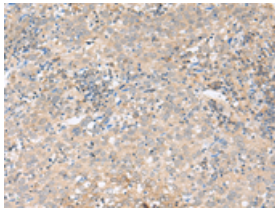
#### Applications

##### Immunohistochemistry

Predicted cell location: Cytoplasm

Positive control: Human cervical cancer

Recommended dilution: 40-200



The image on the left is immunohistochemistry of paraffin-embedded Human cervical cancer tissue using ml263878(PIEZO2 Antibody) at dilution 1/35, on the right is treated with synthetic peptide. (Original magnification:  $\times 200$ )

##### ELISA

Recommended dilution: 5000-10000

联系电话: 4008-898-798, 021-61725725

联系QQ: 2881505695, 2881505696

邮箱: [mlbio\\_cn@yeah.net](mailto:mlbio_cn@yeah.net)

网址: [www.mlbio.cn](http://www.mlbio.cn)