

## Anti-KDM2A antibody

<b>Cat. No.</b>	ml263892
<b>Package</b>	25 µl/100 µl/200 µl
<b>Storage</b>	-20°C, pH7.4 PBS, 0.05% NaN <sub>3</sub> , 40% Glycerol

### Product overview

<b>Description</b>	Anti-KDM2A rabbit polyclonal antibody
<b>Applications</b>	ELISA, IHC
<b>Immunogen</b>	Synthetic peptide of human KDM2A
<b>Reactivity</b>	Human, Mouse
<b>Content</b>	1.74 mg/ml
<b>Host species</b>	Rabbit
<b>Ig class</b>	Immunogen-specific rabbit IgG
<b>Purification</b>	Antigen affinity purification

### Target information

<b>Symbol</b>	KDM2A
<b>Full name</b>	lysine demethylase 2A
<b>Synonyms</b>	FBL7; CXXC8; FBL11; FBXL11; JHDM1A; LILINA
<b>Swissprot</b>	Q9Y2K7

### Target Background

This gene encodes a member of the F-box protein family which is characterized by an approximately 40 amino acid motif, the F-box. The F-box proteins constitute one of the four subunits of ubiquitin protein ligase complex called SCFs (SKP1-cullin-F-box), which function in phosphorylation-dependent ubiquitination. The F-box proteins are divided into 3 classes: Fbws containing WD-40 domains, Fbls containing leucine-rich repeats, and Fbxs containing either different protein-protein interaction modules or no recognizable motifs. The protein encoded by this gene belongs to the Fbls class and, in addition to an F-box, contains at least six highly degenerated leucine-rich repeats. This family member plays a role in epigenetic silencing. It nucleates at CpG islands and specifically demethylates both mono- and di-methylated lysine-36 of histone H3. Alternative splicing results in multiple transcript variants.

订购热线: 4008-898-798

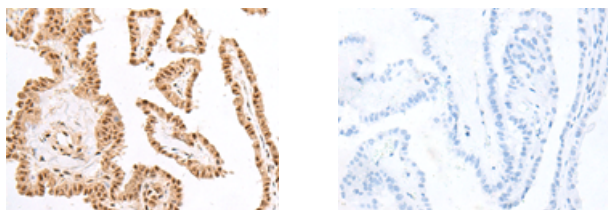
#### Applications

##### Immunohistochemistry

Predicted cell location: Nucleus

Positive control: Human thyroid cancer

Recommended dilution: 50-300



The image on the left is immunohistochemistry of paraffin-embedded Human thyroid cancer tissue using ml263892(KDM2A Antibody) at dilution 1/60, on the right is treated with synthetic peptide. (Original magnification:  $\times 200$ )

##### ELISA

Recommended dilution: 5000-10000

联系电话: 4008-898-798, 021-61725725

联系QQ: 2881505695, 2881505696

邮箱: [mlbio\\_cn@yeah.net](mailto:mlbio_cn@yeah.net)

网址: [www.mlbio.cn](http://www.mlbio.cn)