

Anti-FBXW8 antibody

Cat. No.	ml263900
Package	25 µl/100 µl/200 µl
Storage	-20°C, pH7.4 PBS, 0.05% NaN ₃ , 40% Glycerol

Product overview

Description	Anti-FBXW8 rabbit polyclonal antibody
Applications	ELISA, IHC
Immunogen	Synthetic peptide of human FBXW8
Reactivity	Human
Content	2.04 mg/ml
Host species	Rabbit
Ig class	Immunogen-specific rabbit IgG
Purification	Antigen affinity purification

Target information

Symbol	FBXW8
Full name	F-box and WD repeat domain containing 8
Synonyms	FBW6; FBW8; FBX29; FBXW6; FBXO29
Swissprot	Q8N3Y1

Target Background

This gene encodes a member of the F-box protein family, members of which are characterized by an approximately 40 amino acid motif, the F-box. The F-box proteins constitute one of the four subunits of ubiquitin protein ligase complex called SCFs (SKP1-cullin-F-box), which function in phosphorylation-dependent ubiquitination. The F-box proteins are divided into three classes: Fbws containing WD-40 domains, Fbls containing leucine-rich repeats, and Fbxs containing either different protein-protein interaction modules or no recognizable motifs. The protein encoded by this gene contains a WD-40 domain, in addition to an F-box motif, so it belongs to the Fbw class. Alternatively spliced transcript variants encoding distinct isoforms have been identified for this gene.

订购热线: 4008-898-798

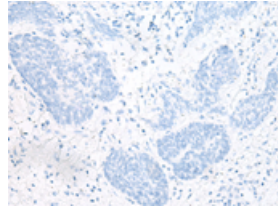
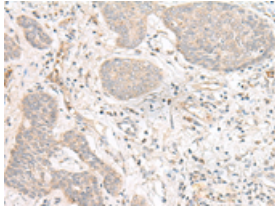
Applications

Immunohistochemistry

Predicted cell location: Cytoplasm or Nucleus

Positive control: Human esophagus cancer

Recommended dilution: 40-200

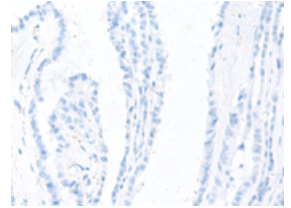
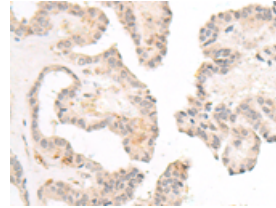


The image on the left is immunohistochemistry of paraffin-embedded Human esophagus cancer tissue using ml263900(FBXW8 Antibody) at dilution 1/70, on the right is treated with synthetic peptide. (Original magnification: $\times 200$)

Predicted cell location: Cytoplasm or Nucleus

Positive control: Human thyroid cancer

Recommended dilution: 40-200



The image on the left is immunohistochemistry of paraffin-embedded Human thyroid cancer tissue using ml263900(FBXW8 Antibody) at dilution 1/70, on the right is treated with synthetic peptide. (Original magnification: $\times 200$)

ELISA

Recommended dilution: 5000-10000

联系电话: 4008-898-798, 021-61725725

联系QQ: 2881505695, 2881505696

邮箱: mlbio_cn@yeah.net

网址: www.mlbio.cn