

Anti-FNBP1L antibody

Cat. No.	ml263927
Package	25 µl/100 µl/200 µl
Storage	-20°C, pH7.4 PBS, 0.05% NaN ₃ , 40% Glycerol

Product overview

Description	Anti-FNBP1L rabbit polyclonal antibody
Applications	ELISA, IHC
Immunogen	Synthetic peptide of human FNBP1L
Reactivity	Human, Mouse, Rat
Content	0.9 mg/ml
Host species	Rabbit
Ig class	Immunogen-specific rabbit IgG
Purification	Antigen affinity purification

Target information

Symbol	FNBP1L
Full name	formin binding protein 1 like
Synonyms	TOCA1; C1orf39
Swissprot	Q5T0N5

Target Background

The protein encoded by this gene binds to both CDC42 and N-WASP. This protein promotes CDC42-induced actin polymerization by activating the N-WASP-WIP complex and, therefore, is involved in a pathway that links cell surface signals to the actin cytoskeleton. Alternative splicing results in multiple transcript variants encoding different isoforms.

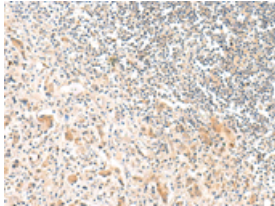
Applications

Immunohistochemistry

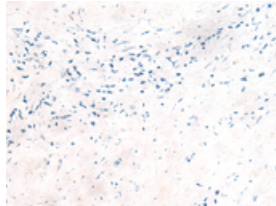
Predicted cell location: Cytoplasm

Positive control: Human prostate cancer

Recommended dilution: 20-100



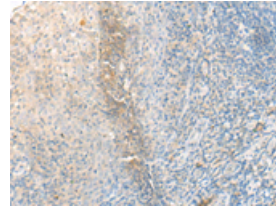
The image on the left is immunohistochemistry of paraffin-embedded Human prostate cancer tissue using ml263927(FNBP1L Antibody) at dilution 1/30, on the right is treated with synthetic peptide. (Original magnification: $\times 200$)



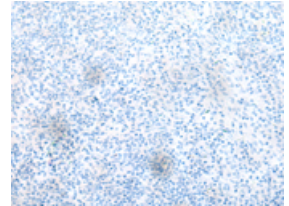
Predicted cell location: Cytoplasm

Positive control: Human tonsil

Recommended dilution: 20-100



The image on the left is immunohistochemistry of paraffin-embedded Human tonsil tissue using ml263927(FNBP1L Antibody) at dilution 1/30, on the right is treated with synthetic peptide. (Original magnification: $\times 200$)



ELISA

Recommended dilution: 5000-10000

联系电话: 4008-898-798, 021-61725725

联系QQ: 2881505695, 2881505696

邮箱: mlbio_cn@yeah.net

网址: www.mlbio.cn