

Anti-RALGAPA1 antibody

Cat. No.	ml263966
Package	25 µl/100 µl/200 µl
Storage	-20°C, pH7.4 PBS, 0.05% NaN ₃ , 40% Glycerol

Product overview

Description	Anti-RALGAPA1 rabbit polyclonal antibody
Applications	ELISA, IHC
Immunogen	Synthetic peptide of human RALGAPA1
Reactivity	Human, Mouse, Rat
Content	1.62 mg/ml
Host species	Rabbit
Ig class	Immunogen-specific rabbit IgG
Purification	Antigen affinity purification

Target information

Symbol	RALGAPA1
Full name	Ral GTPase activating protein catalytic alpha subunit 1
Synonyms	p240; GRIPE; GARNL1; TULIP1; RalGAPalpha1
Swissprot	Q6GYQ0

Target Background

This gene encodes a major subunit of the RAL-GTPase activating protein. A similar protein in mouse binds E12, a transcriptional regulator of immunoglobulin genes. The mouse protein also functions in skeletal muscle by binding to the regulatory 14-3-3 proteins upon stimulation with insulin or muscle contraction. A pseudogene of this gene has been identified on chromosome 9.

订购热线: 4008-898-798

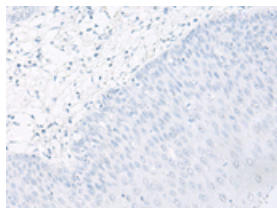
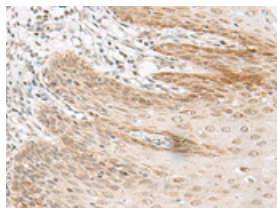
Applications

Immunohistochemistry

Predicted cell location: Nucleus

Positive control: Human esophagus cancer

Recommended dilution: 40-200

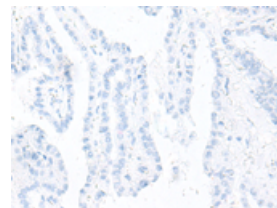
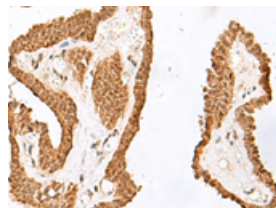


The image on the left is immunohistochemistry of paraffin-embedded Human esophagus cancer tissue using ml263966(RALGAPA1 Antibody) at dilution 1/55, on the right is treated with synthetic peptide. (Original magnification: $\times 200$)

Predicted cell location: Nucleus

Positive control: Human thyroid cancer

Recommended dilution: 40-200



The image on the left is immunohistochemistry of paraffin-embedded Human thyroid cancer tissue using ml263966(RALGAPA1 Antibody) at dilution 1/55, on the right is treated with synthetic peptide. (Original magnification: $\times 200$)

ELISA

Recommended dilution: 5000-10000

联系电话: 4008-898-798, 021-61725725

联系QQ: 2881505695, 2881505696

邮箱: mlbio_cn@yeah.net

网址: www.mlbio.cn