

Anti-GHDC antibody

Cat. No.	ml263988
Package	25 µl/100 µl/200 µl
Storage	-20°C, pH7.4 PBS, 0.05% NaN ₃ , 40% Glycerol

Product overview

Description	Anti-GHDC rabbit polyclonal antibody
Applications	ELISA, IHC
Immunogen	Synthetic peptide of human GHDC
Reactivity	Human
Content	1.44 mg/ml
Host species	Rabbit
Ig class	Immunogen-specific rabbit IgG
Purification	Antigen affinity purification

Target information

Symbol	GHDC
Full name	GH3 domain containing
Synonyms	LGP1; D11LGP1
Swissprot	Q8N2G8

Target Background

GHDC, also known as LGP1, is a GH3 domain-containing protein that is highly expressed in normal mammary tissues and mammary tumors. GHDC is primarily located in the nuclear envelope. In mouse, its gene is located on chromosome 11 adjacent to the STAT3/5 locus. Little is known of the function of this protein.

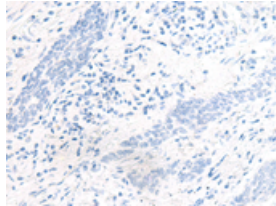
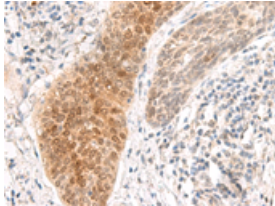
Applications

Immunohistochemistry

Predicted cell location: Nucleus envelope

Positive control: Human esophagus cancer

Recommended dilution: 50-300

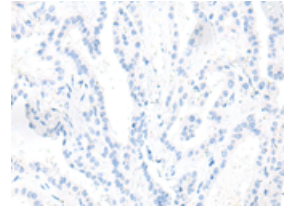
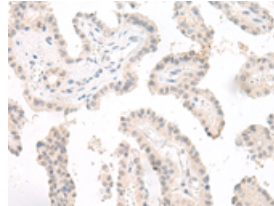


The image on the left is immunohistochemistry of paraffin-embedded Human esophagus cancer tissue using ml263988(GHDC Antibody) at dilution 1/90, on the right is treated with synthetic peptide. (Original magnification: $\times 200$)

Predicted cell location: Nucleus envelope

Positive control: Human thyroid cancer

Recommended dilution: 50-300



The image on the left is immunohistochemistry of paraffin-embedded Human thyroid cancer tissue using ml263988(GHDC Antibody) at dilution 1/90, on the right is treated with synthetic peptide. (Original magnification: $\times 200$)

ELISA

Recommended dilution: 5000-10000

联系电话: 4008-898-798, 021-61725725

联系QQ: 2881505695, 2881505696

邮箱: mlbio_cn@yeah.net

网址: www.mlbio.cn