

Anti-GMEB2 antibody

Cat. No.	ml264005
Package	25 µl/100 µl/200 µl
Storage	-20°C, pH7.4 PBS, 0.05% NaN ₃ , 40% Glycerol

Product overview

Description	Anti-GMEB2 rabbit polyclonal antibody
Applications	ELISA, IHC
Immunogen	Synthetic peptide of human GMEB2
Reactivity	Human, Mouse, Rat
Content	0.78 mg/ml
Host species	Rabbit
Ig class	Immunogen-specific rabbit IgG
Purification	Antigen affinity purification

Target information

Symbol	GMEB2
Full name	glucocorticoid modulatory element binding protein 2
Synonyms	PIF79; GMEB-2; P79PIF
Swissprot	Q9UKD1

Target Background

This gene is a member of KDWK gene family. The product of this gene associates with GMEB1 protein, and the complex is essential for parvovirus DNA replication. Study of rat homolog implicates the role of this gene in modulation of transactivation by the glucocorticoid receptor bound to glucocorticoid response elements. This gene appears to use multiple polyadenylation sites.

订购热线: 4008-898-798

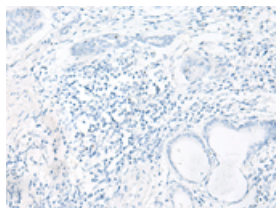
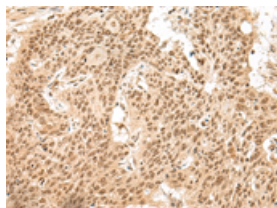
Applications

Immunohistochemistry

Predicted cell location: Nucleus and Cytoplasm

Positive control: Human esophagus cancer

Recommended dilution: 30-150

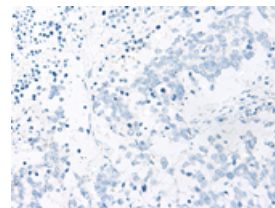
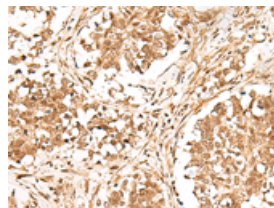


The image on the left is immunohistochemistry of paraffin-embedded Human esophagus cancer tissue using ml264005(GMEB2 Antibody) at dilution 1/30, on the right is treated with synthetic peptide. (Original magnification: $\times 200$)

Predicted cell location: Nucleus and Cytoplasm

Positive control: Human lung cancer

Recommended dilution: 30-150



The image on the left is immunohistochemistry of paraffin-embedded Human lung cancer tissue using ml264005(GMEB2 Antibody) at dilution 1/30, on the right is treated with synthetic peptide. (Original magnification: $\times 200$)

ELISA

Recommended dilution: 5000-10000

联系电话: 4008-898-798, 021-61725725

联系QQ: 2881505695, 2881505696

邮箱: mlbio_cn@yeah.net

网址: www.mlbio.cn