

Anti-GPR26 antibody

Cat. No.	ml264058
Package	25 µl/100 µl/200 µl
Storage	-20°C, pH7.4 PBS, 0.05% NaN ₃ , 40% Glycerol

Product overview

Description	Anti-GPR26 rabbit polyclonal antibody
Applications	ELISA, IHC
Immunogen	Synthetic peptide of human GPR26
Reactivity	Human, Mouse, Rat
Content	0.9 mg/ml
Host species	Rabbit
Ig class	Immunogen-specific rabbit IgG
Purification	Antigen affinity purification

Target information

Symbol	GPR26
Full name	G protein-coupled receptor 26
Synonyms	
Swissprot	Q8NDV2

Target Background

This gene encodes a G protein-couple receptor protein. G-protein-coupled receptors are a large family of membrane proteins that are involved in cellular responses to environmental stimuli, neurotransmitters, and hormones. The encoded protein may play a role in neurodegenerative diseases. Epigenetic silencing of this gene has been observed in gliomas.

订购热线: 4008-898-798

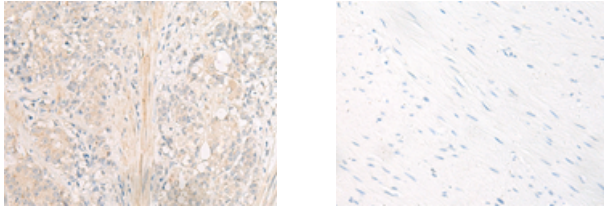
Applications

Immunohistochemistry

Predicted cell location: Cell membrane

Positive control: Human colorectal cancer

Recommended dilution: 20-100



The image on the left is immunohistochemistry of paraffin-embedded Human colorectal cancer tissue using ml264058(GPR26 Antibody) at dilution 1/30, on the right is treated with synthetic peptide. (Original magnification: $\times 200$)

ELISA

Recommended dilution: 5000-10000

联系电话: 4008-898-798, 021-61725725

联系QQ: 2881505695, 2881505696

邮箱: mlbio_cn@yeah.net

网址: www.mlbio.cn