

Anti-GPR160 antibody

Cat. No.	ml264094
Package	25 µl/100 µl/200 µl
Storage	-20°C, pH7.4 PBS, 0.05% NaN ₃ , 40% Glycerol

Product overview

Description	Anti-GPR160 rabbit polyclonal antibody
Applications	ELISA, IHC
Immunogen	Synthetic peptide of human GPR160
Reactivity	Human
Content	1.02 mg/ml
Host species	Rabbit
Ig class	Immunogen-specific rabbit IgG
Purification	Antigen affinity purification

Target information

Symbol	GPR160
Full name	G protein-coupled receptor 160
Synonyms	GPCR1; GPCR150
Swissprot	Q9UJ42

Target Background

Orphan receptor.

订购热线: 4008-898-798

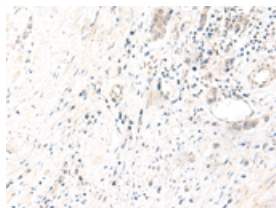
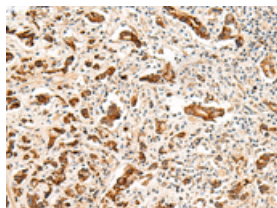
Applications

Immunohistochemistry

Predicted cell location: Cell membrane and Cytoplasm

Positive control: Human prostate cancer

Recommended dilution: 30-150

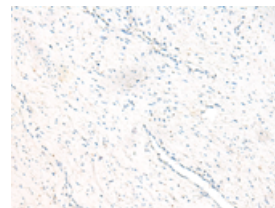
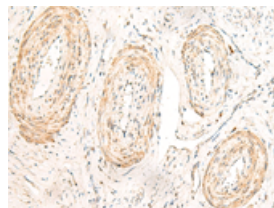


The image on the left is immunohistochemistry of paraffin-embedded Human prostate cancer tissue using ml264094(GPR160 Antibody) at dilution 1/35, on the right is treated with synthetic peptide. (Original magnification: $\times 200$)

Predicted cell location: Cell membrane and Cytoplasm

Positive control: Human cervical cancer

Recommended dilution: 30-150



The image on the left is immunohistochemistry of paraffin-embedded Human cervical cancer tissue using ml264094(GPR160 Antibody) at dilution 1/35, on the right is treated with synthetic peptide. (Original magnification: $\times 200$)

ELISA

Recommended dilution: 5000-10000

联系电话: 4008-898-798, 021-61725725

联系QQ: 2881505695, 2881505696

邮箱: mlbio_cn@yeah.net

网址: www.mlbio.cn