

Anti-GPR157 antibody

Cat. No.	ml264105
Package	25 µl/100 µl/200 µl
Storage	-20°C, pH7.4 PBS, 0.05% NaN ₃ , 40% Glycerol

Product overview

Description	Anti-GPR157 rabbit polyclonal antibody
Applications	ELISA, IHC
Immunogen	Synthetic peptide of human GPR157
Reactivity	Human
Content	1.8 mg/ml
Host species	Rabbit
Ig class	Immunogen-specific rabbit IgG
Purification	Antigen affinity purification

Target information

Symbol	GPR157
Full name	G protein-coupled receptor 157
Synonyms	
Swissprot	Q5UAW9

Target Background

Orphan receptor that promotes neuronal differentiation of radial glial progenitors (RGPs). The activity of this receptor is mediated by a G(q)-protein that activates a phosphatidylinositol-calcium second messenger.

订购热线: 4008-898-798

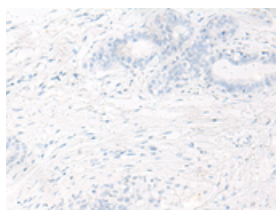
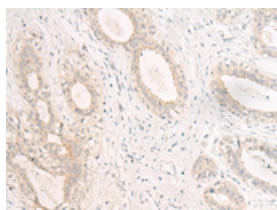
Applications

Immunohistochemistry

Predicted cell location: Cell projection

Positive control: Human breast cancer

Recommended dilution: 40-200

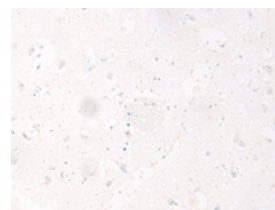
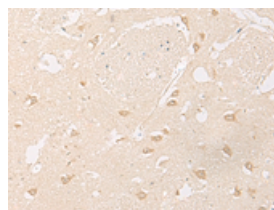


The image on the left is immunohistochemistry of paraffin-embedded Human breast cancer tissue using ml264105(GPR157 Antibody) at dilution 1/60, on the right is treated with synthetic peptide. (Original magnification: $\times 200$)

Predicted cell location: Cell projection

Positive control: Human brain

Recommended dilution: 40-200



The image on the left is immunohistochemistry of paraffin-embedded Human brain tissue using ml264105(GPR157 Antibody) at dilution 1/60, on the right is treated with synthetic peptide. (Original magnification: $\times 200$)

ELISA

Recommended dilution: 5000-10000

联系电话: 4008-898-798, 021-61725725

联系QQ: 2881505695, 2881505696

邮箱: mlbio_cn@yeah.net

网址: www.mlbio.cn