

Anti-SETD1A antibody

| | |
|-----------------|---|
| Cat. No. | ml264218 |
| Package | 25 µl/100 µl/200 µl |
| Storage | -20°C, pH7.4 PBS, 0.05% NaN ₃ , 40% Glycerol |

Product overview

| | |
|---------------------|--|
| Description | Anti-SETD1A rabbit polyclonal antibody |
| Applications | ELISA, IHC |
| Immunogen | Synthetic peptide of human SETD1A |
| Reactivity | Human |
| Content | 1.08 mg/ml |
| Host species | Rabbit |
| Ig class | Immunogen-specific rabbit IgG |
| Purification | Antigen affinity purification |

Target information

| | |
|------------------|--------------------------|
| Symbol | SETD1A |
| Full name | SET domain containing 1A |
| Synonyms | Set1; KMT2F; Set1A |
| Swissprot | O15047 |

Target Background

The protein encoded by this gene is a component of a histone methyltransferase (HMT) complex that produces mono-, di-, and trimethylated histone H3 at Lys4. Trimethylation of histone H3 at lysine 4 (H3K4me3) is a chromatin modification known to generally mark the transcription start sites of active genes. The protein contains SET domains, a RNA recognition motif domain and is a member of the class V-like SAM-binding methyltransferase superfamily.

订购热线: 4008-898-798

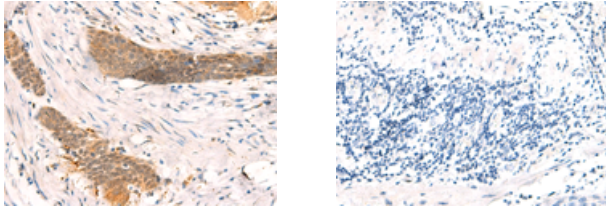
Applications

Immunohistochemistry

Predicted cell location: Nucleus

Positive control: Human esophagus cancer

Recommended dilution: 40-200



The image on the left is immunohistochemistry of paraffin-embedded Human esophagus cancer tissue using ml264218(SETD1A Antibody) at dilution 1/40, on the right is treated with synthetic peptide. (Original magnification: $\times 200$)

ELISA

Recommended dilution: 5000-10000

联系电话: 4008-898-798, 021-61725725

联系QQ: 2881505695, 2881505696

邮箱: mlbio_cn@yeah.net

网址: www.mlbio.cn