

Anti-HSPA4L antibody

Cat. No.	ml264220
Package	25 µl/100 µl/200 µl
Storage	-20°C, pH7.4 PBS, 0.05% NaN ₃ , 40% Glycerol

Product overview

Description	Anti-HSPA4L rabbit polyclonal antibody
Applications	ELISA, IHC
Immunogen	Synthetic peptide of human HSPA4L
Reactivity	Human, Mouse
Content	0.9 mg/ml
Host species	Rabbit
Ig class	Immunogen-specific rabbit IgG
Purification	Antigen affinity purification

Target information

Symbol	HSPA4L
Full name	heat shock protein family A (Hsp70) member 4 like
Synonyms	APG-1; HSPH3; Osp94
Swissprot	O95757

Target Background

The protein encoded by this gene is heat shock inducible and may act as a chaperone. The encoded protein can protect the heat-shocked cell against the harmful effects of aggregated proteins. This gene is highly expressed in leukemia cells and may be a good target for therapeutic intervention. Several transcripts encoding different isoforms have been found for this gene.

订购热线: 4008-898-798

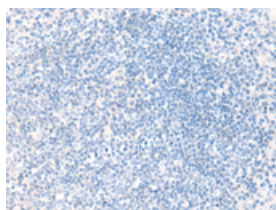
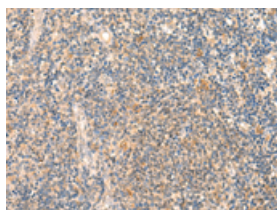
Applications

Immunohistochemistry

Predicted cell location: Cytoplasm or Nucleus

Positive control: Human tonsil

Recommended dilution: 30-150

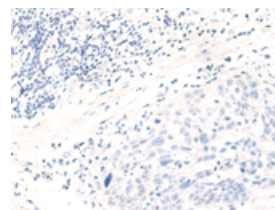
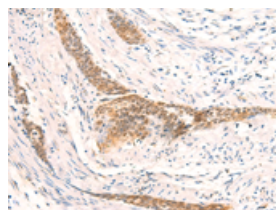


The image on the left is immunohistochemistry of paraffin-embedded Human tonsil tissue using ml264220(HSPA4L Antibody) at dilution 1/30, on the right is treated with synthetic peptide. (Original magnification: $\times 200$)

Predicted cell location: Cytoplasm or Nucleus

Positive control: Human esophagus cancer

Recommended dilution: 30-150



The image on the left is immunohistochemistry of paraffin-embedded Human esophagus cancer tissue using ml264220(HSPA4L Antibody) at dilution 1/30, on the right is treated with synthetic peptide. (Original magnification: $\times 200$)

ELISA

Recommended dilution: 5000-10000

联系电话: 4008-898-798, 021-61725725

联系QQ: 2881505695, 2881505696

邮箱: mlbio_cn@yeah.net

网址: www.mlbio.cn