

Anti-IP6K1 antibody

Cat. No.	ml264268
Package	25 µl/100 µl/200 µl
Storage	-20°C, pH7.4 PBS, 0.05% NaN ₃ , 40% Glycerol

Product overview

Description	Anti-IP6K1 rabbit polyclonal antibody
Applications	ELISA, IHC
Immunogen	Synthetic peptide of human IP6K1
Reactivity	Human, Mouse, Rat
Content	1.56 mg/ml
Host species	Rabbit
Ig class	Immunogen-specific rabbit IgG
Purification	Antigen affinity purification

Target information

Symbol	IP6K1
Full name	inositol hexakisphosphate kinase 1
Synonyms	PiUS; IHPK1
Swissprot	Q92551

Target Background

This gene encodes a member of the inositol phosphokinase family. The encoded protein may be responsible for the conversion of inositol hexakisphosphate (InsP₆) to diphosphoinositol pentakisphosphate (InsP₇/PP-InsP₅). It may also convert 1,3,4,5,6-pentakisphosphate (InsP₅) to PP-InsP₄. Alternatively spliced transcript variants have been described.

订购热线: 4008-898-798

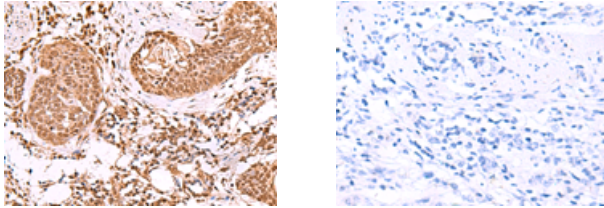
Applications

Immunohistochemistry

Predicted cell location: Nucleus

Positive control: Human esophagus cancer

Recommended dilution: 50-300



The image on the left is immunohistochemistry of paraffin-embedded Human esophagus cancer tissue using ml264268(IP6K1 Antibody) at dilution 1/55, on the right is treated with synthetic peptide. (Original magnification: $\times 200$)

ELISA

Recommended dilution: 5000-10000

联系电话: 4008-898-798, 021-61725725

联系QQ: 2881505695, 2881505696

邮箱: mlbio_cn@yeah.net

网址: www.mlbio.cn