

Anti-KDM7A antibody

Cat. No.	ml264292
Package	25 µl/100 µl/200 µl
Storage	-20°C, pH7.4 PBS, 0.05% NaN ₃ , 40% Glycerol

Product overview

Description	Anti-KDM7A rabbit polyclonal antibody
Applications	ELISA, IHC
Immunogen	Synthetic peptide of human KDM7A
Reactivity	Human, Mouse
Content	0.96 mg/ml
Host species	Rabbit
Ig class	Immunogen-specific rabbit IgG
Purification	Antigen affinity purification

Target information

Symbol	KDM7A
Full name	lysine demethylase 7A
Synonyms	JHDM1D
Swissprot	Q6ZMT4

Target Background

Histone demethylase required for brain development. Specifically demethylates dimethylated 'Lys-9' and 'Lys-27' (H3K9me₂ and H3K27me₂, respectively) of histone H3 and monomethylated histone H4 'Lys-20' residue (H4K20Me₁), thereby playing a central role in histone code. Specifically binds trimethylated 'Lys-4' of histone H3 (H3K4me₃), affecting histone demethylase specificity: in presence of H3K4me₃, it has no demethylase activity toward H3K9me₂, while it has high activity toward H3K27me₂. Demethylates H3K9me₂ in absence of H3K4me₃. Has activity toward H4K20Me₁ only when nucleosome is used as a substrate and when not histone octamer is used as substrate.

订购热线: 4008-898-798

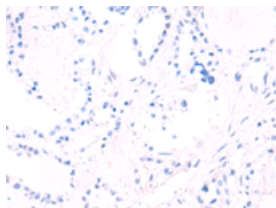
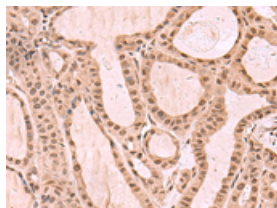
Applications

Immunohistochemistry

Predicted cell location: Cytoplasm and Nucleus

Positive control: Human thyroid cancer

Recommended dilution: 30-150

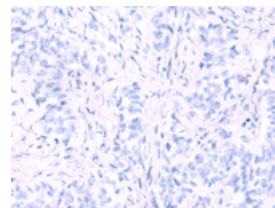
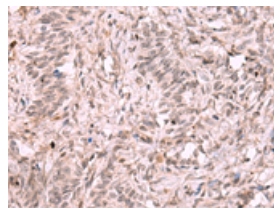


The image on the left is immunohistochemistry of paraffin-embedded Human thyroid cancer tissue using ml264292(KDM7A Antibody) at dilution 1/35, on the right is treated with synthetic peptide. (Original magnification: $\times 200$)

Predicted cell location: Cytoplasm and Nucleus

Positive control: Human ovarian cancer

Recommended dilution: 30-150



The image on the left is immunohistochemistry of paraffin-embedded Human ovarian cancer tissue using ml264292(KDM7A Antibody) at dilution 1/35, on the right is treated with synthetic peptide. (Original magnification: $\times 200$)

ELISA

Recommended dilution: 5000-10000

联系电话: 4008-898-798, 021-61725725

联系QQ: 2881505695, 2881505696

邮箱: mlbio_cn@yeah.net

网址: www.mlbio.cn