

## Anti-SLC12A7 antibody

<b>Cat. No.</b>	ml264322
<b>Package</b>	25 µl/100 µl/200 µl
<b>Storage</b>	-20°C, pH7.4 PBS, 0.05% NaN <sub>3</sub> , 40% Glycerol

### Product overview

<b>Description</b>	Anti-SLC12A7 rabbit polyclonal antibody
<b>Applications</b>	ELISA, IHC
<b>Immunogen</b>	Synthetic peptide of human SLC12A7
<b>Reactivity</b>	Human
<b>Content</b>	0.96 mg/ml
<b>Host species</b>	Rabbit
<b>Ig class</b>	Immunogen-specific rabbit IgG
<b>Purification</b>	Antigen affinity purification

### Target information

<b>Symbol</b>	SLC12A7
<b>Full name</b>	solute carrier family 12 member 7
<b>Synonyms</b>	KCC4
<b>Swissprot</b>	Q9Y666

### Target Background

Mediates electroneutral potassium-chloride cotransport when activated by cell swelling. May mediate K<sup>+</sup> uptake into Deiters' cells in the cochlea and contribute to K<sup>+</sup>-recycling in the inner ear. Important for the survival of cochlear outer and inner hair cells and the maintenance of the organ of Corti. May be required for basolateral Cl<sup>-</sup>-extrusion in the kidney and contribute to renal acidification (By similarity).

订购热线: 4008-898-798

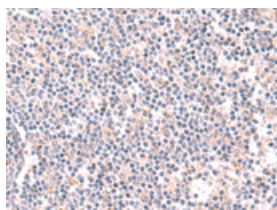
## Applications

### Immunohistochemistry

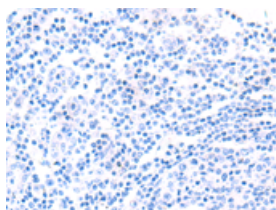
Predicted cell location: Cytoplasm

Positive control: Human tonsil

Recommended dilution: 25-100



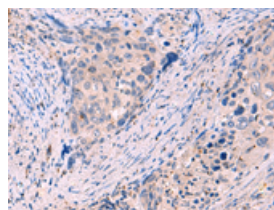
The image on the left is immunohistochemistry of paraffin-embedded Human tonsil tissue using ml264322(SLC12A7 Antibody) at dilution 1/35, on the right is treated with synthetic peptide. (Original magnification:  $\times 200$ )



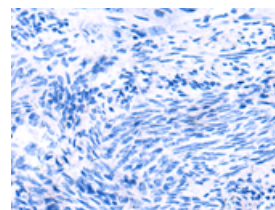
Predicted cell location: Cytoplasm

Positive control: Human cervical cancer

Recommended dilution: 25-100



The image on the left is immunohistochemistry of paraffin-embedded Human cervical cancer tissue using ml264322(SLC12A7 Antibody) at dilution 1/35, on the right is treated with synthetic peptide. (Original magnification:  $\times 200$ )



### ELISA

Recommended dilution: 5000-10000

联系电话: 4008-898-798, 021-61725725

联系QQ: 2881505695, 2881505696

邮箱: [mlbio\\_cn@yeah.net](mailto:mlbio_cn@yeah.net)

网址: [www.mlbio.cn](http://www.mlbio.cn)