

Anti-KCNK10 antibody

Cat. No.	ml264324
Package	25 µl/100 µl/200 µl
Storage	-20°C, pH7.4 PBS, 0.05% NaN ₃ , 40% Glycerol

Product overview

Description	Anti-KCNK10 rabbit polyclonal antibody
Applications	ELISA, IHC
Immunogen	Synthetic peptide of human KCNK10
Reactivity	Human, Rat
Content	0.96 mg/ml
Host species	Rabbit
Ig class	Immunogen-specific rabbit IgG
Purification	Antigen affinity purification

Target information

Symbol	KCNK10
Full name	potassium two pore domain channel subfamily K member 10
Synonyms	TREK2; TREK-2; K2p10.1; PPP1R97
Swissprot	P57789

Target Background

The protein encoded by this gene belongs to the family of potassium channel proteins containing two pore-forming P domains. This channel is an open rectifier which primarily passes outward current under physiological K⁺ concentrations, and is stimulated strongly by arachidonic acid and to a lesser degree by membrane stretching, intracellular acidification, and general anaesthetics. Several alternatively spliced transcript variants encoding different isoforms have been identified for this gene.

订购热线: 4008-898-798

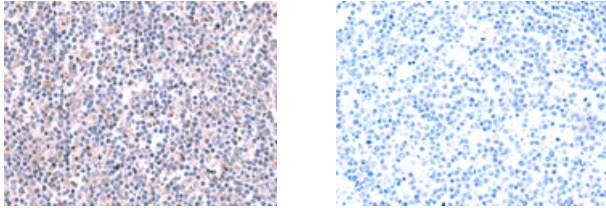
Applications

Immunohistochemistry

Predicted cell location: Cytoplasm

Positive control: Human tonsil

Recommended dilution: 30-150



The image on the left is immunohistochemistry of paraffin-embedded Human tonsil tissue using ml264324(KCNK10 Antibody) at dilution 1/35, on the right is treated with synthetic peptide. (Original magnification: $\times 200$)

ELISA

Recommended dilution: 5000-10000

联系电话: 4008-898-798, 021-61725725

联系QQ: 2881505695, 2881505696

邮箱: mlbio_cn@yeah.net

网址: www.mlbio.cn