

Anti-KCNU1 antibody

| | |
|-----------------|---|
| Cat. No. | ml264335 |
| Package | 25 µl/100 µl/200 µl |
| Storage | -20°C, pH7.4 PBS, 0.05% NaN ₃ , 40% Glycerol |

Product overview

| | |
|---------------------|---------------------------------------|
| Description | Anti-KCNU1 rabbit polyclonal antibody |
| Applications | ELISA, IHC |
| Immunogen | Synthetic peptide of human KCNU1 |
| Reactivity | Human |
| Content | 0.72 mg/ml |
| Host species | Rabbit |
| Ig class | Immunogen-specific rabbit IgG |
| Purification | Antigen affinity purification |

Target information

| | |
|------------------|--|
| Symbol | KCNU1 |
| Full name | potassium calcium-activated channel subfamily U member 1 |
| Synonyms | KCa5; Slo3; KCNMC1; KCa5.1; Kcnma3 |
| Swissprot | A8MYU2 |

Target Background

This gene encodes a member of the potassium channel family of proteins. The encoded voltage-gated ion channel allows the outward flow of potassium ions during plasma membrane hyperpolarization in sperm. Opening of this channel may be regulated by calcium ion levels. Homozygous knockout mice that lack the related mouse gene exhibit male sterility. Alternative splicing results in multiple transcript variants.

订购热线: 4008-898-798

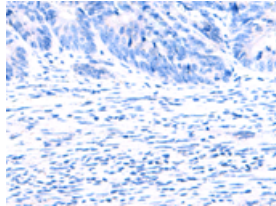
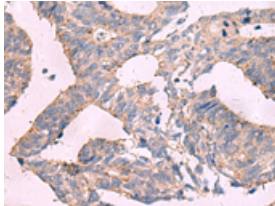
Applications

Immunohistochemistry

Predicted cell location: Cytoplasm

Positive control: Human colorectal cancer

Recommended dilution: 25-100



The image on the left is immunohistochemistry of paraffin-embedded Human colorectal cancer tissue using ml264335(KCNU1 Antibody) at dilution 1/25, on the right is treated with synthetic peptide. (Original magnification: $\times 200$)

ELISA

Recommended dilution: 5000-10000

联系电话: 4008-898-798, 021-61725725

联系QQ: 2881505695, 2881505696

邮箱: mlbio_cn@yeah.net

网址: www.mlbio.cn