

Anti-FLT1 antibody

Cat. No.	ml151117
Package	25 µl/100 µl/200 µl
Storage	-20°C, pH7.4 PBS, 0.05% NaN ₃ , 40% Glycerol

Product overview

Description	Anti-FLT1 rabbit polyclonal antibody
Applications	ELISA, IF
Immunogen	Synthetic peptide of human FLT1
Reactivity	Human
Content	1.1 mg/ml
Host species	Rabbit
Ig class	Immunogen-specific rabbit IgG
Purification	Antigen affinity purification

Target information

Symbol	FLT1
Full name	fms-related tyrosine kinase 1
Synonyms	FLT; FLT-1; VEGFR1; VEGFR-1
Swissprot	P17948

Target Background

This gene encodes a member of the vascular endothelial growth factor receptor (VEGFR) family. VEGFR family members are receptor tyrosine kinases (RTKs) which contain an extracellular ligand-binding region with seven immunoglobulin (Ig)-like domains, a transmembrane segment, and a tyrosine kinase (TK) domain within the cytoplasmic domain. This protein binds to VEGFR-A, VEGFR-B and placental growth factor and plays an important role in angiogenesis and vasculogenesis. Expression of this receptor is found in vascular endothelial cells, placental trophoblast cells and peripheral blood monocytes. Multiple transcript variants encoding different isoforms have been found for this gene. Isoforms include a full-length transmembrane receptor isoform and shortened, soluble isoforms. The soluble isoforms are associated with the onset of pre-eclampsia.

订购热线: 4008-898-798

Applications

ELISA

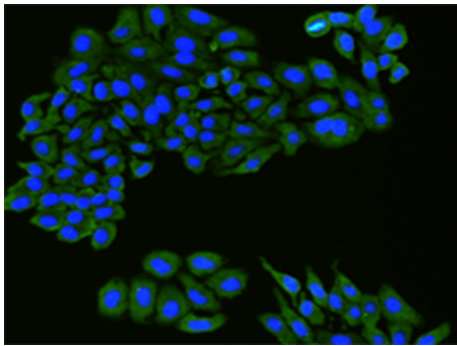
Recommended dilution: 5000-240000

Immunofluorescence

Predicted cell location: Cytoplasm, Cell membrane

Positive control: HepG2 cell

Recommended dilution: 100-500



The image is immunofluorescence of HepG2 cell
using ml151117(FLT1 Antibody) at dilution 1/100.

联系电话: 4008-898-798, 021-61725725

联系QQ: 2881505695, 2881505696

邮箱: mlbio_cn@yeah.net

网址: www.mlbio.cn