

Anti-VNN1 antibody

Cat. No.	ml151152
Package	25 µl/100 µl/200 µl
Storage	-20°C, pH7.4 PBS, 0.05% NaN ₃ , 40% Glycerol

Product overview

Description	Anti-VNN1 rabbit polyclonal antibody
Applications	ELISA, IF
Immunogen	Synthetic peptide of human VNN1
Reactivity	Human
Content	1.7 mg/ml
Host species	Rabbit
Ig class	Immunogen-specific rabbit IgG
Purification	Antigen affinity purification

Target information

Symbol	VNN1
Full name	vanin 1
Synonyms	HDLCQ8; Tiff66
Swissprot	O95497

Target Background

This gene encodes a member of the vanin family of proteins, which share extensive sequence similarity with each other, and also with biotinidase. The family includes secreted and membrane-associated proteins, a few of which have been reported to participate in hematopoietic cell trafficking. No biotinidase activity has been demonstrated for any of the vanin proteins, however, they possess pantetheinase activity, which may play a role in oxidative-stress response. This protein, like its mouse homolog, is likely a GPI-anchored cell surface molecule. The mouse protein is expressed by the perivascular thymic stromal cells and regulates migration of T-cell progenitors to the thymus. This gene lies in close proximity to, and in the same transcriptional orientation as, two other vanin genes on chromosome 6q23-q24.

订购热线: 4008-898-798

Applications

ELISA

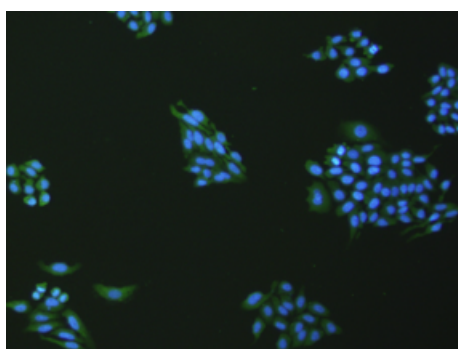
Recommended dilution: 5000-240000

Immunofluorescence

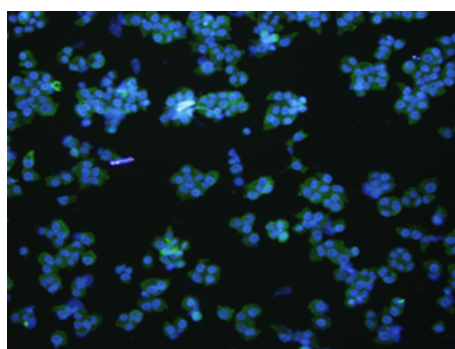
Predicted cell location: Cytoplasm

Positive control: HepG2 and NCCIT cell

Recommended dilution: 100-500



The image is immunofluorescence of HepG2 cell using ml151152(VNN1 Antibody) at dilution 1/100.



The image is immunofluorescence of NCCIT cell using ml151152(VNN1 Antibody) at dilution 1/200.

联系电话: 4008-898-798, 021-61725725

联系QQ: 2881505695, 2881505696

邮箱: mlbio_cn@yeah.net

网址: www.mlbio.cn