

Anti-ACTB antibody

Cat. No.	ml110001
Package	25 µl/100 µl/200 µl
Storage	-20°C, pH7.4 PBS, 0.05% NaN ₃ , 40% Glycerol

Product overview

Description	Anti-ACTB rabbit polyclonal antibody
Applications	ELISA, WB, IHC
Immunogen	Synthetic peptide of human ACTB
Reactivity	Human, Mouse, Rat
Content	1 mg/ml
Host species	Rabbit
Ig class	Immunogen-specific rabbit IgG
Purification	Antigen affinity purification

Target information

Symbol	ACTB
Full name	actin, beta
Synonyms	BRWS1; PS1TP5BP1
Swissprot	P60709

Target Background

This gene encodes one of six different actin proteins. Actins are highly conserved proteins that are involved in cell motility, structure, and integrity. This actin is a major constituent of the contractile apparatus and one of the two nonmuscle cytoskeletal actins.

Applications

Immunohistochemistry

Predicted cell location: Cytoplasm

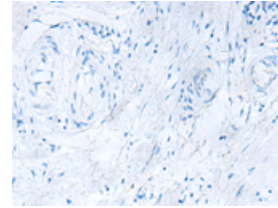
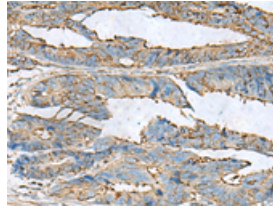
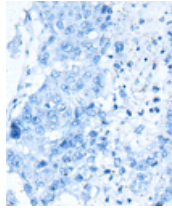
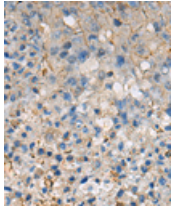
Positive control: Human liver cancer

Recommended dilution: 50-300

Predicted cell location: Cytoplasm

Positive control: Human colorectal cancer

Recommended dilution: 50-300



The image on the left is immunohistochemistry of paraffin-embedded Human liver cancer tissue using ml110001(ACTB Antibody) at dilution 1/70, on the right is treated with synthetic peptide. (Original magnification: $\times 200$)

The image on the left is immunohistochemistry of paraffin-embedded Human colorectal cancer tissue using ml110001(ACTB Antibody) at dilution 1/70, on the right is treated with synthetic peptide. (Original magnification: $\times 200$)

Western blotting

Predicted band size: 42 kDa

Positive control: RAW264.7 cell, Human fetal liver tissue, Human fetal brain tissue, 231, HepG2, Hela and 293T cell, Mouse brain tissue, Mouse kidney tissue, Mouse liver tissue, Rat brain tissue, Rat liver tissue, Rat kidney tissue, C2C12 cell lysates

Recommended dilution: 1000-5000

Gel: 8%SDS-PAGE

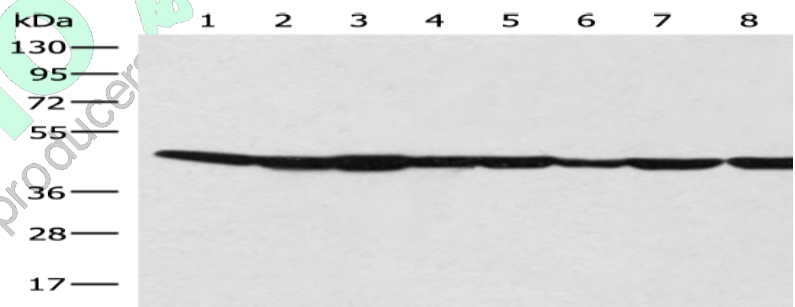
Lysate: 40 μ g

Lane 1-14: RAW264.7 cell, Human fetal liver tissue, Human fetal brain tissue, 231, HepG2, Hela and 293T cell, Mouse brain tissue, Mouse kidney tissue, Mouse liver tissue, Rat brain tissue, Rat liver tissue, Rat kidney tissue, C2C12 cell lysates

Primary antibody: ml110001(ACTB Antibody) at dilution 1/1000

Secondary antibody: Goat anti rabbit IgG at 1/5000 dilution

Exposure time: 5 seconds



ELISA

Recommended dilution: 5000-10000

联系电话: 4008-898-798, 021-61725725

联系QQ: 2881505695, 2881505696



订购热线: 4008-898-798

邮箱: mlbio_cn@yeah.net

网址: www.mlbio.cn