

## Anti-GAPDH antibody

<b>Cat. No.</b>	ml110016
<b>Package</b>	25 µl/100 µl/200 µl
<b>Storage</b>	-20°C, pH7.4 PBS, 0.05% NaN <sub>3</sub> , 40% Glycerol

### Product overview

<b>Description</b>	Anti-GAPDH rabbit polyclonal antibody
<b>Applications</b>	ELISA, WB, IHC
<b>Immunogen</b>	Fusion protein of human GAPDH
<b>Reactivity</b>	Human, Mouse, Rat
<b>Content</b>	1 mg/ml
<b>Host species</b>	Rabbit
<b>Ig class</b>	Immunogen-specific rabbit IgG
<b>Purification</b>	Antigen affinity purification

### Target information

<b>Symbol</b>	GAPDH
<b>Full name</b>	glyceraldehyde-3-phosphate dehydrogenase
<b>Synonyms</b>	G3PD; GAPD; HEL-S-162eP
<b>Swissprot</b>	P04406

### Target Background

This gene encodes a member of the glyceraldehyde-3-phosphate dehydrogenase protein family. The encoded protein has been identified as a moonlighting protein based on its ability to perform mechanistically distinct functions. The product of this gene catalyzes an important energy-yielding step in carbohydrate metabolism, the reversible oxidative phosphorylation of glyceraldehyde-3-phosphate in the presence of inorganic phosphate and nicotinamide adenine dinucleotide (NAD). The encoded protein has additionally been identified to have uracil DNA glycosylase activity in the nucleus. Also, this protein contains a peptide that has antimicrobial activity against *E. coli*, *P. aeruginosa*, and *C. albicans*. Studies of a similar protein in mouse have assigned a variety of additional functions including nitrosylation of nuclear proteins, the regulation of mRNA stability, and acting as a transferrin receptor on the cell surface of macrophage. Many pseudogenes similar to this locus are present in the human genome. Alternative splicing results in multiple transcript variants.

订购热线: 4008-898-798

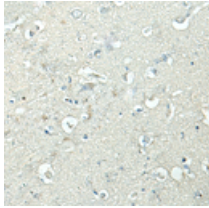
### Applications

#### Immunohistochemistry

Predicted cell location: Cytoplasm, Nucleus

Positive control: Human brain

Recommended dilution: 50-300

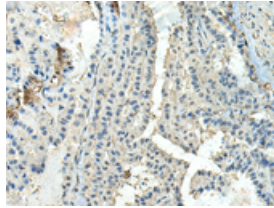


The image is immunohistochemistry of paraffin-embedded Human brain tissue using ml110016(GAPDH Antibody) at dilution 1/55. (Original magnification: ×200)

Predicted cell location: Cytoplasm, Nucleus

Positive control: Human thyroid cancer

Recommended dilution: 50-300



The image is immunohistochemistry of paraffin-embedded Human thyroid cancer tissue using ml110016(GAPDH Antibody) at dilution 1/55. (Original magnification: ×200)

#### Western blotting

Predicted band size: 36 kDa

Positive control: Hela and SKOV3 cell, Human fetal liver tissue, Mouse liver tissue, Rat liver tissue, LO2 cell lysates

Recommended dilution: 1000-8000

Gel: 8%SDS-PAGE

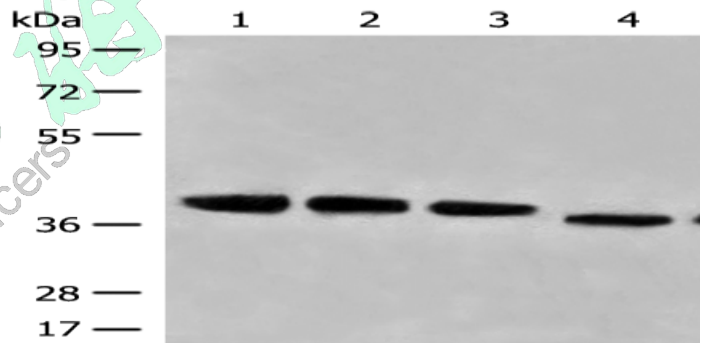
Lysate: 40 µg

Lane 1-6: Hela and SKOV3 cell, Human fetal liver tissue, Mouse liver tissue, Rat liver tissue, LO2 cell lysates

Primary antibody: ml110016(GAPDH Antibody) at dilution 1/800

Secondary antibody: Goat anti rabbit IgG at 1/8000 dilution

Exposure time: 1 second



#### ELISA

Recommended dilution: 5000-10000

联系电话: 4008-898-798, 021-61725725

联系QQ: 2881505695, 2881505696

邮箱: [mlbio\\_cn@yeah.net](mailto:mlbio_cn@yeah.net)

网址: [www.mlbio.cn](http://www.mlbio.cn)