

Anti-PCP4 antibody

Cat. No.	ml120025
Package	25 µl/100 µl/200 µl
Storage	-20°C, pH7.4 PBS, 0.05% NaN ₃ , 40% Glycerol

Product overview

Description	Anti-PCP4 rabbit polyclonal antibody
Applications	ELISA, WB, IHC
Immunogen	Fusion protein of human PCP4
Reactivity	Human, Mouse, Rat
Content	1 mg/ml
Host species	Rabbit
Ig class	Immunogen-specific rabbit IgG
Purification	Antigen affinity purification

Target information

Symbol	PCP4
Full name	purkinje cell protein 4
Synonyms	PEP-19
Swissprot	P48539

Target Background

PCP-4 (Purkinje cell protein 4), also known as PEP-19, is a calmodulin (CaM) regulatory protein that is highly expressed in neuronal cells. Through its IQ motif, PCP-4 mediates both the calcium-dependent binding properties of CaM and the rates of association and dissociation of calcium from the C-terminal domain of CaM. The IQ motif contains a serine residue which can be phosphorylated by all isoforms of protein kinase C (PKC). PCP-4 is implicated in uterine leiomyomas, as well as in neurodegenerative disorders such as Alzheimer's disease and Huntington's disease. Additionally, overexpression of PCP-4 is thought to play a role in cerebellar hypoplasia, a key feature of Down syndrome.

订购热线: 4008-898-798

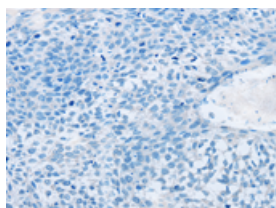
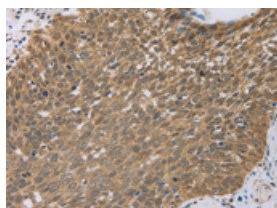
Applications

Immunohistochemistry

Predicted cell location: Nucleus

Positive control: Human cervical cancer

Recommended dilution: 100-300

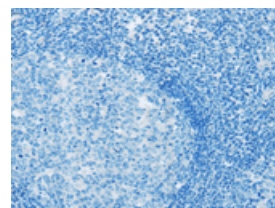
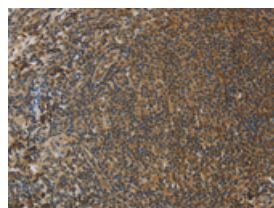


The image on the left is immunohistochemistry of paraffin-embedded Human cervical cancer tissue using ml120025(PCP4 Antibody) at dilution 1/50, on the right is treated with fusion protein. (Original magnification: $\times 200$)

Predicted cell location: Nucleus

Positive control: Human tonsil

Recommended dilution: 100-300



The image on the left is immunohistochemistry of paraffin-embedded Human tonsil tissue using ml120025(PCP4 Antibody) at dilution 1/50, on the right is treated with fusion protein. (Original magnification: $\times 200$)

Western blotting

Predicted band size: 7 kDa

Positive control: Mouse brain tissue

Recommended dilution: 500-2000

Gel: 12% SDS-PAGE

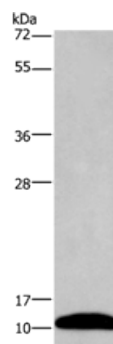
Lysate: 40 μ g

Lane: Mouse brain tissue

Primary antibody: ml120025(PCP4 Antibody) at dilution 1/1000

Secondary antibody: Goat anti rabbit IgG at 1/8000 dilution

Exposure time: 2 minutes



ELISA

Recommended dilution: 2000-10000

联系电话: 4008-898-798, 021-61725725

联系QQ: 2881505695, 2881505696

邮箱: mlbio_cn@yeah.net

网址: www.mlbio.cn