

Anti-ACOT2 antibody

Cat. No.	ml120042
Package	25 µl/100 µl/200 µl
Storage	-20°C, pH7.4 PBS, 0.05% NaN ₃ , 40% Glycerol

Product overview

Description	Anti-ACOT2 rabbit polyclonal antibody
Applications	ELISA, WB, IHC
Immunogen	Fusion protein of human ACOT2
Reactivity	Human, Mouse
Content	0.3 mg/ml
Host species	Rabbit
Ig class	Immunogen-specific rabbit IgG
Purification	Antigen affinity purification

Target information

Symbol	ACOT2
Full name	Acyl-CoA thioesterase 2
Synonyms	MTE1; PTE2; CTE1A; PTE2A; CTE-1A; ZAP128
Swissprot	P49753

Target Background

This gene encodes a member of the acyl-CoA thioesterase protein family, and is one of four acyl-CoA hydrolase genes located in a cluster on chromosome 14. Alternative splicing results in multiple transcript variants. Acyl-CoA thioesterases, such as ACOT2, are a group of enzymes that hydrolyze Coenzyme A (CoA) esters, such as acyl-CoAs, bile CoAs, and CoA esters of prostaglandins, to the corresponding free acid and CoA. ACOT2 shows high acyl-CoA thioesterase activity on medium- and long-chain acyl-CoAs, with an optimal pH of 8.5. It is most active on myristoyl-CoA but also shows high activity on palmitoyl-CoA, stearoyl-CoA, and arachidoyl-CoA.

订购热线: 4008-898-798

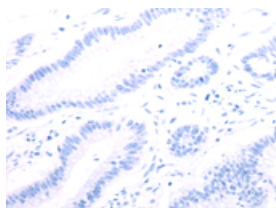
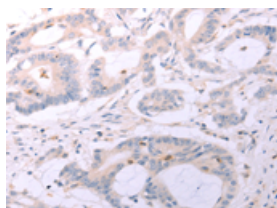
Applications

Immunohistochemistry

Predicted cell location: Cytoplasm

Positive control: Human colon cancer

Recommended dilution: 15-50

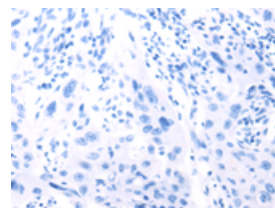
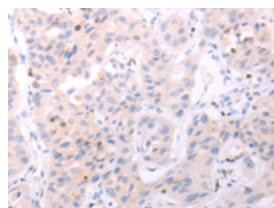


The image on the left is immunohistochemistry of paraffin-embedded Human colon cancer tissue using ml120042(ACOT2 Antibody) at dilution 1/25, on the right is treated with fusion protein. (Original magnification: $\times 200$)

Predicted cell location: Cytoplasm

Positive control: Human lung cancer

Recommended dilution: 15-50



The image on the left is immunohistochemistry of paraffin-embedded Human lung cancer tissue using ml120042(ACOT2 Antibody) at dilution 1/25, on the right is treated with fusion protein. (Original magnification: $\times 200$)

Western blotting

Predicted band size: 53 kDa

Positive control: Mouse kidney and liver tissue

Recommended dilution: 200-1000

Gel: 8%SDS-PAGE

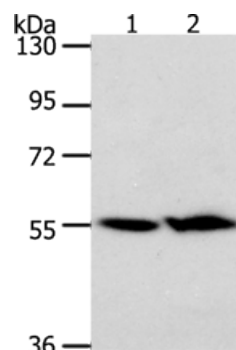
Lysate: 40 μ g

Lane 1-2: Mouse kidney tissue, Mouse liver tissue

Primary antibody: ml120042(ACOT2 Antibody) at dilution 1/200

Secondary antibody: Goat anti rabbit IgG at 1/8000 dilution

Exposure time: 5 minutes



ELISA

Recommended dilution: 1000-2000

联系电话: 4008-898-798, 021-61725725

联系QQ: 2881505695, 2881505696

邮箱: mlbio_cn@yeah.net

网址: www.mlbio.cn