

## Anti-AGR2 antibody

<b>Cat. No.</b>	ml120051
<b>Package</b>	25 µl/100 µl/200 µl
<b>Storage</b>	-20°C, pH7.4 PBS, 0.05% NaN <sub>3</sub> , 40% Glycerol

### Product overview

<b>Description</b>	Anti-AGR2 rabbit polyclonal antibody
<b>Applications</b>	ELISA, WB, IHC
<b>Immunogen</b>	Fusion protein of human AGR2
<b>Reactivity</b>	Human, Mouse
<b>Content</b>	0.3 mg/ml
<b>Host species</b>	Rabbit
<b>Ig class</b>	Immunogen-specific rabbit IgG
<b>Purification</b>	Antigen affinity purification

### Target information

<b>Symbol</b>	AGR2
<b>Full name</b>	Anterior gradient protein 2 homolog
<b>Synonyms</b>	AG2, GOB-4, HAG-2, XAG-2, PDIA17
<b>Swissprot</b>	O95994

### Target Background

Anterior gradient protein 2 homolog (AGR2) is a human protein originally discovered in *Xenopus laevis*, encoded for by the gene of the same name. In *Xenopus* AGR2 is an important role in cement gland differentiation, however in human cancer cell lines high levels of AGR2 correlate with reduction of the p53 response and AGR2 levels are elevated in the preneoplastic tissue Barrett's oesophagus.

订购热线: 4008-898-798

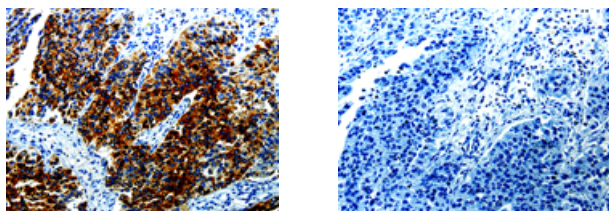
### Applications

#### Immunohistochemistry

Predicted cell location: Cytoplasm

Positive control: Human renal cancer

Recommended dilution: 10-50



The image on the left is immunohistochemistry of paraffin-embedded Human renal cancer tissue using ml120051(AGR2 Antibody) at dilution 1/10, on the right is treated with fusion protein. (Original magnification:  $\times 200$ )

#### Western blotting

Predicted band size: 20 kDa

Positive control: Mouse Large intestine tissue

Recommended dilution: 1000-5000

Gel: 10% SDS-PAGE

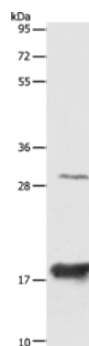
Lysate: 40  $\mu$ g

Lane: Mouse Large intestine tissue

Primary antibody: ml120051(AGR2 Antibody) at dilution 1/1000

Secondary antibody: Goat anti rabbit IgG at 1/8000 dilution

Exposure time: 20 seconds



#### ELISA

Recommended dilution: 1000-10000

联系电话: 4008-898-798, 021-61725725

联系QQ: 2881505695, 2881505696

邮箱: [mlbio\\_cn@yeah.net](mailto:mlbio_cn@yeah.net)

网址: [www.mlbio.cn](http://www.mlbio.cn)