

Anti-ALDH1A1/ALDH1A2/ALDH1A3 antibody

Cat. No.	ml120058
Package	25 µl/100 µl/200 µl
Storage	-20°C, pH7.4 PBS, 0.05% NaN ₃ , 40% Glycerol

Product overview

Description	Anti-ALDH1A1/ALDH1A2/ALDH1A3 rabbit polyclonal antibody
Applications	ELISA, WB, IHC
Immunogen	Fusion protein of human ALDH1A1/ALDH1A2/ALDH1A3
Reactivity	Human
Content	0.4 mg/ml
Host species	Rabbit
Ig class	Immunogen-specific rabbit IgG
Purification	Antigen affinity purification

Target information

Symbol	ALDH1A1/ALDH1A2/ALDH1A3
Full name	Aldehyde dehydrogenase 1 family, member A1/2/3
Synonyms	ALDC, ALDH1, PUMB1, ALDH11, RALDH1, ALDH-E1; RALDH2, RALDH2-T, RALDH(II); ALDH6, RALDH3, ALDH1A6
Swissprot	P00352/O94788/P47895

Target Background

This protein belongs to the aldehyde dehydrogenase family of proteins. The product of this gene is an enzyme that catalyzes the synthesis of retinoic acid (RA) from retinaldehyde. Retinoic acid, the active derivative of vitamin A (retinol), is a hormonal signaling molecule that functions in developing and adult tissues. The studies of a similar mouse gene suggest that this enzyme and the cytochrome CYP26A1, concurrently establish local embryonic retinoic acid levels which facilitate posterior organ development and prevent spina bifida. Four transcript variants encoding distinct isoforms have been identified for this gene.

订购热线: 4008-898-798

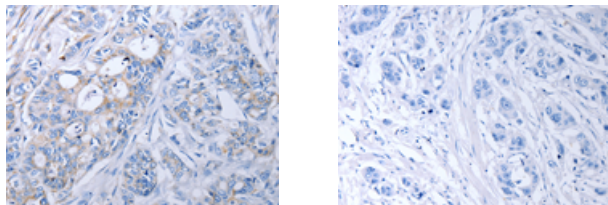
Applications

Immunohistochemistry

Predicted cell location: Cytoplasm

Positive control: Human colon cancer

Recommended dilution: 20-50



The image on the left is immunohistochemistry of paraffin-embedded Human colon cancer tissue using ml120058(ALDH1A1/ALDH1A2/ALDH1A3 Antibody) at dilution 1/40, on the right is treated with fusion protein. (Original magnification: ×200)

Western blotting

Predicted band size: 57 kDa

Positive control: Human liver cancer tissue

Recommended dilution: 500-1000

Gel: 10% SDS-PAGE

Lysate: 30 µg

Lane: Human liver cancer tissue

Primary antibody: ml120058(ALDH1A1/ALDH1A2/ALDH1A3 Antibody) at dilution 1/450

Secondary antibody: Goat anti rabbit IgG at 1/8000 dilution

Exposure time: 1 minute



ELISA

Recommended dilution: 1000-5000

联系电话: 4008-898-798, 021-61725725

联系QQ: 2881505695, 2881505696

邮箱: mlbio_cn@yeah.net

网址: www.mlbio.cn