

Anti-SNCG antibody

Cat. No.	ml120132
Package	25 µl/100 µl/200 µl
Storage	-20°C, pH7.4 PBS, 0.05% NaN ₃ , 40% Glycerol

Product overview

Description	Anti-SNCG rabbit polyclonal antibody
Applications	ELISA, WB, IHC
Immunogen	Fusion protein of human SNCG
Reactivity	Human
Content	0.8 mg/ml
Host species	Rabbit
Ig class	Immunogen-specific rabbit IgG
Purification	Antigen affinity purification

Target information

Symbol	SNCG
Full name	synuclein, gamma (breast cancer-specific protein 1)
Synonyms	SR; BCSG1
Swissprot	O76070

Target Background

This gene encodes a member of the synuclein family of proteins which are believed to be involved in the pathogenesis of neurodegenerative diseases. Mutations in this gene have also been associated with breast tumor development.

订购热线: 4008-898-798

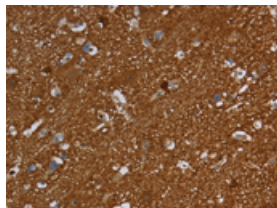
Applications

Immunohistochemistry

Predicted cell location: Cytoplasm

Positive control: Human brain

Recommended dilution: 100-300

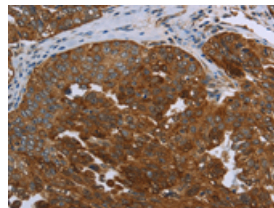


The image is immunohistochemistry of paraffin-embedded Human brain tissue using ml120132(SNCG Antibody) at dilution 1/60. (Original magnification: $\times 200$)

Predicted cell location: Cytoplasm

Positive control: Human ovarian cancer

Recommended dilution: 100-300



The image is immunohistochemistry of paraffin-embedded Human ovarian cancer tissue using ml120132(SNCG Antibody) at dilution 1/60. (Original magnification: $\times 200$)

Western blotting

Predicted band size: 13 kDa

Positive control: HT-29 cells

Recommended dilution: 500-2000

Gel: 12% SDS-PAGE

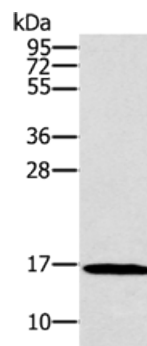
Lysate: 40 μ g

Lane: HT29 cells

Primary antibody: ml120132(SNCG Antibody) at dilution 1/800

Secondary antibody: Goat anti rabbit IgG at 1/8000 dilution

Exposure time: 20 seconds



ELISA

Recommended dilution: 2000-10000

联系电话: 4008-898-798, 021-61725725

联系QQ: 2881505695, 2881505696

邮箱: mlbio_cn@yeah.net

网址: www.mlbio.cn