

Anti-ANXA6 antibody

Cat. No.	ml120221
Package	25 µl/100 µl/200 µl
Storage	-20°C, pH7.4 PBS, 0.05% NaN3, 40% Glycerol

Product overview

Description	Anti-ANXA6 rabbit polyclonal antibody
Applications	ELISA, WB, IHC
Immunogen	Fusion protein of human ANXA6
Reactivity	Human, Mouse, Rat
Content	0.3 mg/ml
Host species	Rabbit
Ig class	Immunogen-specific rabbit IgG
Purification	Antigen affinity purification

Target information

Symbol	ANXA6
Full name	annexin A6
Synonyms	ANX6, CBP68
Swissprot	P08133

Target Background

Annexin VI belongs to a family of calcium-dependent membrane and phospholipid binding proteins. Several members of the annexin family have been implicated in membrane-related events along exocytotic and endocytotic pathways. The annexin VI gene is approximately 60 kbp long and contains 26 exons. It encodes a protein of about 68 kDa that consists of eight 68-amino acid repeats separated by linking sequences of variable lengths. It is highly similar to human annexins I and II sequences, each of which contain four such repeats. Annexin VI has been implicated in mediating the endosome aggregation and vesicle fusion in secreting epithelia during exocytosis. Alternatively spliced transcript variants have been described.

订购热线: 4008-898-798

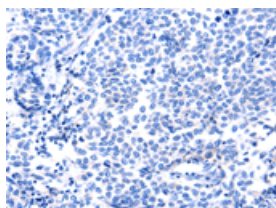
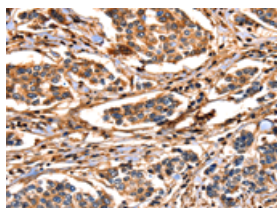
Applications

Immunohistochemistry

Predicted cell location: Cytoplasm, Cell membrane

Positive control: Human breast cancer

Recommended dilution: 25-100

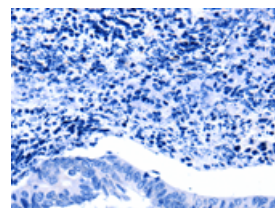
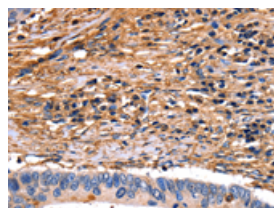


The image on the left is immunohistochemistry of paraffin-embedded Human breast cancer tissue using ml120221(ANXA6 Antibody) at dilution 1/17, on the right is treated with fusion protein. (Original magnification: $\times 200$)

Predicted cell location: Cytoplasm, Cell membrane

Positive control: Human colon cancer

Recommended dilution: 25-100



The image on the left is immunohistochemistry of paraffin-embedded Human colon cancer tissue using ml120221(ANXA6 Antibody) at dilution 1/17, on the right is treated with fusion protein. (Original magnification: $\times 200$)

Western blotting

Predicted band size: 76 kDa

Positive control: 293T cells

Recommended dilution: 200-500

Gel: 8%SDS-PAGE

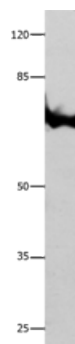
Lysate: 30 μ g

Lane: 293T cells

Primary antibody: ml120221(ANXA6 Antibody) at dilution 1/350

Secondary antibody: Goat anti rabbit IgG at 1/8000 dilution

Exposure time: 10 seconds



ELISA

Recommended dilution: 1000-2000

联系电话: 4008-898-798, 021-61725725

联系QQ: 2881505695, 2881505696

邮箱: mlbio_cn@yeah.net

网址: www.mlbio.cn