

Anti-CTSE antibody

Cat. No.	ml120355
Package	25 µl/100 µl/200 µl
Storage	-20°C, pH7.4 PBS, 0.05% NaN ₃ , 40% Glycerol

Product overview

Description	Anti-CTSE rabbit polyclonal antibody
Applications	ELISA, WB, IHC
Immunogen	Fusion protein of human CTSE
Reactivity	Human, Mouse, Rat
Content	0.4 mg/ml
Host species	Rabbit
Ig class	Immunogen-specific rabbit IgG
Purification	Antigen affinity purification

Target information

Symbol	CTSE
Full name	Cathepsin E
Synonyms	CATE
Swissprot	P14091

Target Background

The protein encoded by this gene is a gastric aspartyl protease that functions as a disulfide-linked homodimer. This protease, which is a member of the peptidase C1 family, has a specificity similar to that of pepsin A and cathepsin D. It is an intracellular proteinase that does not appear to be involved in the digestion of dietary protein and is found in highest concentration in the surface of epithelial mucus-producing cells of the stomach. It is the first aspartic proteinase expressed in the fetal stomach and is found in more than half of gastric cancers. It appears, therefore, to be an oncofetal antigen. Transcript variants utilizing alternative polyadenylation signals and two transcript variants encoding different isoforms exist for this gene.

订购热线: 4008-898-798

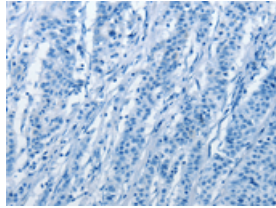
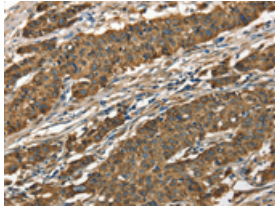
Applications

Immunohistochemistry

Predicted cell location: Cytoplasm

Positive control: Human gastric cancer

Recommended dilution: 50-200

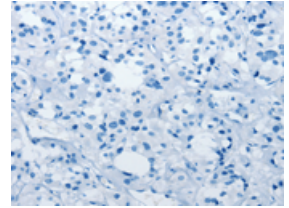
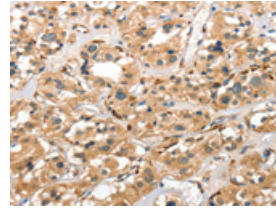


The image on the left is immunohistochemistry of paraffin-embedded Human gastric cancer tissue using ml120355(CTSE Antibody) at dilution 1/40, on the right is treated with fusion protein. (Original magnification: $\times 200$)

Predicted cell location: Cytoplasm

Positive control: Human thyroid cancer

Recommended dilution: 50-200



The image on the left is immunohistochemistry of paraffin-embedded Human thyroid cancer tissue using ml120355(CTSE Antibody) at dilution 1/40, on the right is treated with fusion protein. (Original magnification: $\times 200$)

Western blotting

Predicted band size: 43 kDa

Positive control: Human stomach cancer and mouse stomach tissue

Recommended dilution: 500-2000

Gel: 8%SDS-PAGE

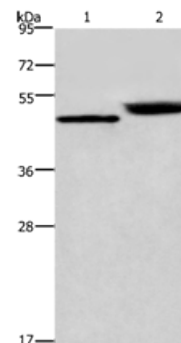
Lysate: 40 μ g

Lane 1-2: Human stomach cancer tissue, mouse stomach tissue

Primary antibody: ml120355(CTSE Antibody) at dilution 1/450

Secondary antibody: Goat anti rabbit IgG at 1/8000 dilution

Exposure time: 20 seconds



ELISA

Recommended dilution: 1000-5000

联系电话: 4008-898-798, 021-61725725

联系QQ: 2881505695, 2881505696

邮箱: mlbio_cn@yeah.net

网址: www.mlbio.cn