

Anti-CDK6 antibody

Cat. No.	ml120398
Package	25 µl/100 µl/200 µl
Storage	-20°C, pH7.4 PBS, 0.05% NaN ₃ , 40% Glycerol

Product overview

Description	Anti-CDK6 rabbit polyclonal antibody
Applications	ELISA, WB, IHC
Immunogen	Fusion protein of human CDK6
Reactivity	Human, Mouse
Content	0.1 mg/ml
Host species	Rabbit
Ig class	Immunogen-specific rabbit IgG
Purification	Antigen affinity purification

Target information

Symbol	CDK6
Full name	Cyclin-dependent kinase 6
Synonyms	PLSTIRE
Swissprot	Q00534

Target Background

The protein encoded by this gene is a member of the cyclin-dependent protein kinase (CDK) family. CDK family members are highly similar to the gene products of *Saccharomyces cerevisiae* cdc28, and *Schizosaccharomyces pombe* cdc2, and are known to be important regulators of cell cycle progression. This kinase is a catalytic subunit of the protein kinase complex that is important for cell cycle G1 phase progression and G1/S transition. The activity of this kinase first appears in mid-G1 phase, which is controlled by the regulatory subunits including D-type cyclins and members of INK4 family of CDK inhibitors. This kinase, as well as CDK4, has been shown to phosphorylate, and thus regulate the activity of, tumor suppressor protein Rb. Expression of this gene is up-regulated in some types of cancer. Multiple alternatively spliced variants, encoding the same protein, have been identified.

订购热线: 4008-898-798

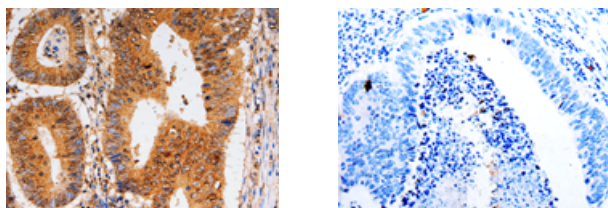
Applications

Immunohistochemistry

Predicted cell location: Cytoplasm, Nucleus

Positive control: Human colon cancer

Recommended dilution: 10-50



The image on the left is immunohistochemistry of paraffin-embedded Human colon cancer tissue using ml120398(CDK6 Antibody) at dilution 1/10, on the right is treated with fusion protein. (Original magnification: $\times 200$)

Western blotting

Predicted band size: 37 kDa

Positive control: Jurkat cells

Recommended dilution: 500-2000

Gel: 10% SDS-PAGE

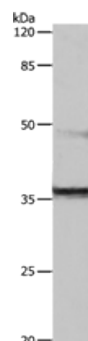
Lysate: 40 μ g

Lane: Jurkat cells

Primary antibody: ml120398(CDK6 Antibody) at dilution 1/150

Secondary antibody: Goat anti rabbit IgG at 1/8000 dilution

Exposure time: 10 seconds



ELISA

Recommended dilution: 1000-5000

联系电话: 4008-898-798, 021-61725725

联系QQ: 2881505695, 2881505696

邮箱: mlbio_cn@yeah.net

网址: www.mlbio.cn