

## Anti-CSNK2A1 antibody

<b>Cat. No.</b>	ml120424
<b>Package</b>	25 µl/100 µl/200 µl
<b>Storage</b>	-20°C, pH7.4 PBS, 0.05% NaN <sub>3</sub> , 40% Glycerol

### Product overview

<b>Description</b>	Anti-CSNK2A1 rabbit polyclonal antibody
<b>Applications</b>	ELISA, WB, IHC
<b>Immunogen</b>	Fusion protein of human CSNK2A1
<b>Reactivity</b>	Human, Mouse, Rat
<b>Content</b>	0.4 mg/ml
<b>Host species</b>	Rabbit
<b>Ig class</b>	Immunogen-specific rabbit IgG
<b>Purification</b>	Antigen affinity purification

### Target information

<b>Symbol</b>	CSNK2A1
<b>Full name</b>	casein kinase 2, alpha 1 polypeptide
<b>Synonyms</b>	CKII, CK2A1
<b>Swissprot</b>	P68400

### Target Background

Casein kinase II is a serine/threonine protein kinase that phosphorylates acidic proteins such as casein. The kinase exists as a tetramer and is composed of an alpha, an alpha-prime, and two beta subunits. The alpha subunits contain the catalytic activity while the beta subunits undergo autophosphorylation. The protein encoded by this gene represents the alpha subunit. While this gene is found on chromosome 20, a related transcribed pseudogene is found on chromosome 11. Three transcript variants encoding two different proteins have been found for this gene.

订购热线: 4008-898-798

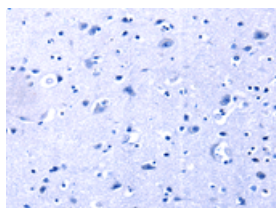
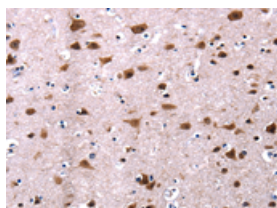
## Applications

### Immunohistochemistry

Predicted cell location: Cytoplasm, Nucleus

Positive control: Human brain

Recommended dilution: 25-100

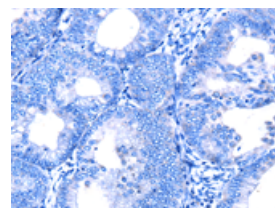
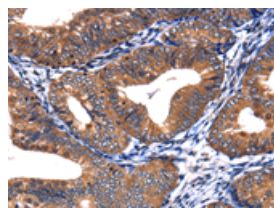


The image on the left is immunohistochemistry of paraffin-embedded Human brain tissue using ml120424(CSNK2A1 Antibody) at dilution 1/13, on the right is treated with fusion protein. (Original magnification:  $\times 200$ )

Predicted cell location: Cytoplasm, Nucleus

Positive control: Human cervical cancer

Recommended dilution: 25-100



The image on the left is immunohistochemistry of paraffin-embedded Human cervical cancer tissue using ml120424(CSNK2A1 Antibody) at dilution 1/13, on the right is treated with fusion protein. (Original magnification:  $\times 200$ )

### Western blotting

Predicted band size: 45 kDa

Positive control: Mouse brain tissue, HeLa and Jurkat cells

Recommended dilution: 200-1000

Gel: 10% SDS-PAGE

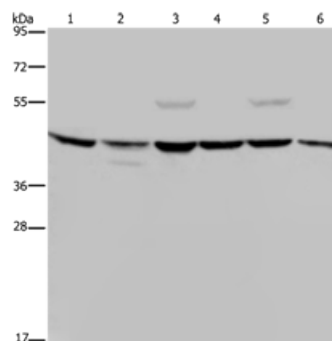
Lysate: 40  $\mu$ g

Lane 1-3: Mouse brain tissue, HeLa cells, Jurkat cells

Primary antibody: ml120424(CSNK2A1 Antibody) at dilution 1/250

Secondary antibody: Goat anti rabbit IgG at 1/8000 dilution

Exposure time: 5 seconds



### ELISA

Recommended dilution: 1000-2000

联系电话: 4008-898-798, 021-61725725

联系QQ: 2881505695, 2881505696

邮箱: [mlbio\\_cn@yeah.net](mailto:mlbio_cn@yeah.net)

网址: [www.mlbio.cn](http://www.mlbio.cn)