

Anti-CLDND1 antibody

Cat. No.	ml120457
Package	25 µl/100 µl/200 µl
Storage	-20°C, pH7.4 PBS, 0.05% NaN ₃ , 40% Glycerol

Product overview

Description	Anti-CLDND1 rabbit polyclonal antibody
Applications	ELISA, WB, IHC
Immunogen	Fusion protein of human CLDND1
Reactivity	Human, Mouse
Content	0.2 mg/ml
Host species	Rabbit
Ig class	Immunogen-specific rabbit IgG
Purification	Antigen affinity purification

Target information

Symbol	CLDND1
Full name	claudin domain containing 1
Synonyms	C3orf4; GENX-3745
Swissprot	Q9NY35

Target Background

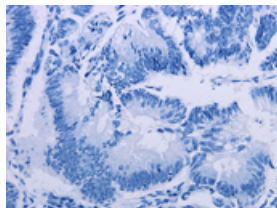
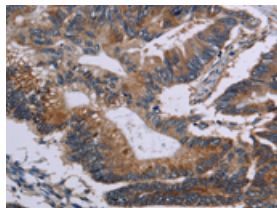
CLDND1 (claudin domain containing 1), also known as C3orf4 or HSPC174, is a 253 amino acid multi-pass membrane protein that is expressed at high levels in adult brain and at lower levels in adult heart. Existing as two alternatively spliced isoforms, CLDND1 is encoded by a gene that maps to human chromosome 3, which houses over 1,100 genes, including a chemokine receptor (CKR) gene cluster and a variety of human cancer-related gene loci. Key tumor suppressing genes on chromosome 3 include those that encode the apoptosis mediator RASSF1, the cell migration regulator HYAL1 and the angiogenesis suppressor SEMA3B. Marfan Syndrome, porphyria, von Hippel-Lindau syndrome, osteogenesis imperfecta and Charcot-Marie-Tooth Disease are a few of the numerous genetic diseases associated with chromosome 3.

订购热线: 4008-898-798

Applications

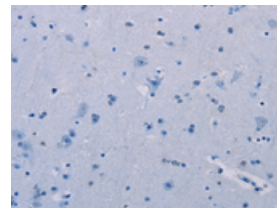
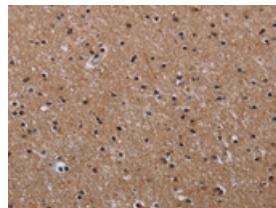
Immunohistochemistry

Predicted cell location: Cytoplasm
Positive control: Human colon cancer
Recommended dilution: 50-200



The image on the left is immunohistochemistry of paraffin-embedded Human colon cancer tissue using ml120457(CLDND1 Antibody) at dilution 1/50, on the right is treated with fusion protein. (Original magnification: $\times 200$)

Predicted cell location: Cytoplasm
Positive control: Human brain
Recommended dilution: 50-200



The image on the left is immunohistochemistry of paraffin-embedded Human brain tissue using ml120457(CLDND1 Antibody) at dilution 1/50, on the right is treated with fusion protein. (Original magnification: $\times 200$)

Western blotting

Predicted band size: 29 kDa
Positive control: Hepg2 and K562 cells
Recommended dilution: 200-1000

Gel: 12% SDS-PAGE

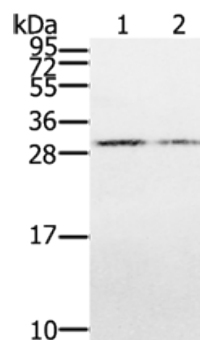
Lysate: 40 μ g

Lane 1-2: Hepg2 cells, K562 cells

Primary antibody: ml120457(CLDND1 Antibody) at dilution 1/500

Secondary antibody: Goat anti rabbit IgG at 1/8000 dilution

Exposure time: 3 minutes



ELISA

Recommended dilution: 2000-5000

联系电话: 4008-898-798, 021-61725725

联系QQ: 2881505695, 2881505696

邮箱: mlbio_cn@yeah.net

网址: www.mlbio.cn