

Anti-CRP antibody

Cat. No.	ml120482
Package	25 µl/100 µl/200 µl
Storage	-20°C, pH7.4 PBS, 0.05% NaN ₃ , 40% Glycerol

Product overview

Description	Anti-CRP rabbit polyclonal antibody
Applications	ELISA, WB, IHC
Immunogen	Fusion protein of human CRP
Reactivity	Human
Content	0.7 mg/ml
Host species	Rabbit
Ig class	Immunogen-specific rabbit IgG
Purification	Antigen affinity purification

Target information

Symbol	CRP
Full name	C-reactive protein, pentraxin-related
Synonyms	PTX1
Swissprot	P02741

Target Background

The protein encoded by this gene belongs to the pentaxin family. It is involved in several host defense related functions based on its ability to recognize foreign pathogens and damaged cells of the host and to initiate their elimination by interacting with humoral and cellular effector systems in the blood. Consequently, the level of this protein in plasma increases greatly during acute phase response to tissue injury, infection, or other inflammatory stimuli.

订购热线: 4008-898-798

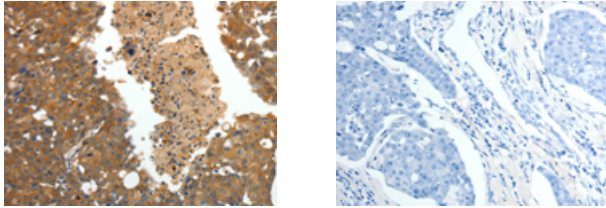
Applications

Immunohistochemistry

Predicted cell location: Cytoplasm

Positive control: Human breast cancer

Recommended dilution: 100-300



The image on the left is immunohistochemistry of paraffin-embedded Human breast cancer tissue using ml120482(CRP Antibody) at dilution 1/80, on the right is treated with fusion protein. (Original magnification: $\times 200$)

Western blotting

Predicted band size: 25 kDa

Positive control: Human liver cancer tissue

Recommended dilution: 1000-5000

Gel: 12% SDS-PAGE

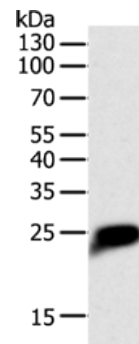
Lysate: 40 μ g

Lane: Human liver cancer tissue

Primary antibody: ml120482(CRP Antibody) at dilution 1/1400

Secondary antibody: Goat anti rabbit IgG at 1/8000 dilution

Exposure time: 1 minute



ELISA

Recommended dilution: 2000-10000

联系电话: 4008-898-798, 021-61725725

联系QQ: 2881505695, 2881505696

邮箱: mlbio_cn@yeah.net

网址: www.mlbio.cn