

Anti-CRTAM antibody

Cat. No.	ml120487
Package	25 µl/100 µl/200 µl
Storage	-20°C, pH7.4 PBS, 0.05% NaN ₃ , 40% Glycerol

Product overview

Description	Anti-CRTAM rabbit polyclonal antibody
Applications	ELISA, WB, IHC
Immunogen	Fusion protein of human CRTAM
Reactivity	Human
Content	0.3 mg/ml
Host species	Rabbit
Ig class	Immunogen-specific rabbit IgG
Purification	Antigen affinity purification

Target information

Symbol	CRTAM
Full name	cytotoxic and regulatory T cell molecule
Synonyms	CD355
Swissprot	O95727

Target Background

Class-I MHC-restricted T cell associated molecule (CRTAM) is a receptor that is primarily expressed on activated cytotoxic lymphocytes, where it may play a role in their adhesion, interaction or migration. It is one of the most highly expressed surface markers detected on activated human NK T cells and CD8 T cells, suggesting its use as a diagnostic tool in various human viral and autoimmune diseases. CRTAM binds nectin-like protein 2 (necl2), which is involved in IL-22 expression regulation. This Necl2/CRTAM molecular pair may regulate cell/cell interactions and may play a role in neuronal interactions. CRTAM is also highly expressed in Purkinje neurons in the cerebellum.

订购热线: 4008-898-798

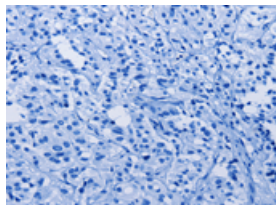
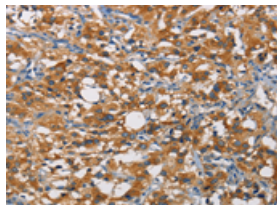
Applications

Immunohistochemistry

Predicted cell location: cytoplasm

Positive control: Human thyroid cancer

Recommended dilution: 50-200

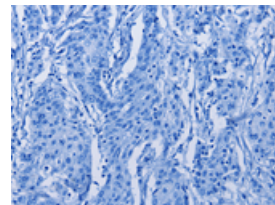
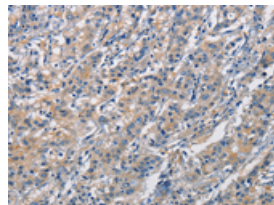


The image on the left is immunohistochemistry of paraffin-embedded Human thyroid cancer tissue using ml120487(CRTAM Antibody) at dilution 1/60, on the right is treated with fusion protein. (Original magnification: $\times 200$)

Predicted cell location: cytoplasm

Positive control: Human gastric cancer

Recommended dilution: 50-200



The image on the left is immunohistochemistry of paraffin-embedded Human gastric cancer tissue using ml120487(CRTAM Antibody) at dilution 1/60, on the right is treated with fusion protein. (Original magnification: $\times 200$)

Western blotting

Predicted band size: 45 kDa

Positive control: 293T cell

Recommended dilution: 500-2000

Gel: 8%SDS-PAGE

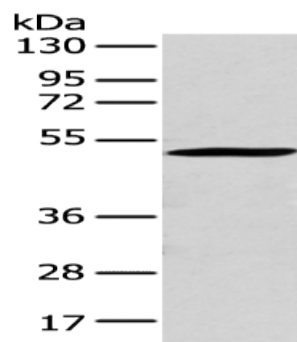
Lysate: 40 μ g

Lane: 293T cell

Primary antibody: ml120487(CRTAM Antibody) at dilution 1/250

Secondary antibody: Goat anti rabbit IgG at 1/8000 dilution

Exposure time: 5 seconds



ELISA

Recommended dilution: 2000-5000

联系电话: 4008-898-798, 021-61725725

联系QQ: 2881505695, 2881505696

邮箱: mlbio_cn@yeah.net

网址: www.mlbio.cn