

## Anti-CYCS antibody

<b>Cat. No.</b>	ml120521
<b>Package</b>	25 µl/100 µl/200 µl
<b>Storage</b>	-20°C, pH7.4 PBS, 0.05% NaN <sub>3</sub> , 40% Glycerol

### Product overview

<b>Description</b>	Anti-CYCS rabbit polyclonal antibody
<b>Applications</b>	ELISA, WB, IHC
<b>Immunogen</b>	Fusion protein of human CYCS
<b>Reactivity</b>	Human, Mouse, Rat
<b>Content</b>	0.2 mg/ml
<b>Host species</b>	Rabbit
<b>Ig class</b>	Immunogen-specific rabbit IgG
<b>Purification</b>	Antigen affinity purification

### Target information

<b>Symbol</b>	CYCS
<b>Full name</b>	cytochrome c, somatic
<b>Synonyms</b>	CYC; HCS; THC4
<b>Swissprot</b>	P99999

### Target Background

This gene encodes a small heme protein that functions as a central component of the electron transport chain in mitochondria. The encoded protein associates with the inner membrane of the mitochondrion where it accepts electrons from cytochrome b and transfers them to the cytochrome oxidase complex. This protein is also involved in initiation of apoptosis. Mutations in this gene are associated with autosomal dominant nonsyndromic thrombocytopenia. Numerous processed pseudogenes of this gene are found throughout the human genome.

订购热线: 4008-898-798

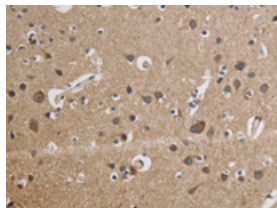
## Applications

### Immunohistochemistry

Predicted cell location: Cytoplasm

Positive control: Human brain

Recommended dilution: 50-200

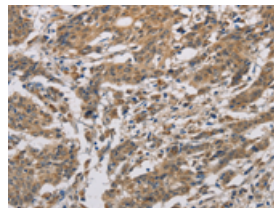


The image is immunohistochemistry of paraffin-embedded Human brain tissue using ml120521(CYCS Antibody) at dilution 1/50. (Original magnification:  $\times 200$ )

Predicted cell location: Cytoplasm

Positive control: Human gastric cancer

Recommended dilution: 50-200



The image is immunohistochemistry of paraffin-embedded Human gastric cancer tissue using ml120521(CYCS Antibody) at dilution 1/50. (Original magnification:  $\times 200$ )

### Western blotting

Predicted band size: 12 kDa

Positive control: Hela cells and mouse brain tissue

Recommended dilution: 500-2000

Gel: 8% SDS-PAGE

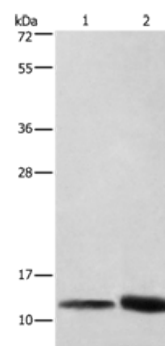
Lysate: 40  $\mu$ g

Lane 1-2: Hela cells, mouse brain tissue

Primary antibody: ml120521(CYCS Antibody) at dilution 1/600

Secondary antibody: Goat anti rabbit IgG at 1/8000 dilution

Exposure time: 10 seconds



### ELISA

Recommended dilution: 2000-5000

联系电话: 4008-898-798, 021-61725725

联系QQ: 2881505695, 2881505696

邮箱: [mlbio\\_cn@yeah.net](mailto:mlbio_cn@yeah.net)

网址: [www.mlbio.cn](http://www.mlbio.cn)