

Anti-SDCCAG3 antibody

Cat. No.	ml120526
Package	25 µl/100 µl/200 µl
Storage	-20°C, pH7.4 PBS, 0.05% NaN ₃ , 40% Glycerol

Product overview

Description	Anti-SDCCAG3 rabbit polyclonal antibody
Applications	ELISA, WB, IHC
Immunogen	Fusion protein of human SDCCAG3
Reactivity	Human, Mouse
Content	0.5 mg/ml
Host species	Rabbit
Ig class	Immunogen-specific rabbit IgG
Purification	Antigen affinity purification

Target information

Symbol	SDCCAG3
Full name	serologically defined colon cancer antigen 3
Synonyms	NY-CO-3
Swissprot	Q96C92

Target Background

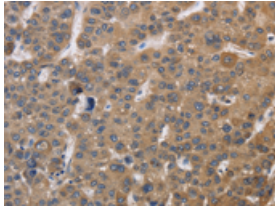
SDCCAG3 protein contains the region similar to the coiled-coil domain of the myosin tail. The same domain is present in the proteins related to the organelles/proteins trafficking, such as kinesin, Golgin-160, and dynein. SDCCAG3 function might be related to protein trafficking and secretion, May be involved in modulation of TNF response, May be involved in presentation of TNFRSF1A on the cell surface. Interaction of SDCCAG3 with the Arf GTPase activating protein GIT1 (G protein-coupled receptor kinase interactor-1). Overexpression of an ArfGAP-negative version of GIT1 also results in an increased number of multinucleate cells suggesting regulation of Arf-mediated vesicular trafficking or signaling via SDCCAG3.

订购热线: 4008-898-798

Applications

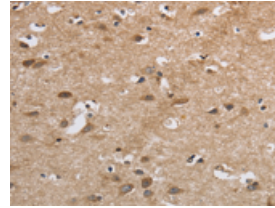
Immunohistochemistry

Predicted cell location: Cytoplasm
Positive control: Human liver cancer
Recommended dilution: 50-200



The image on the left is immunohistochemistry of paraffin-embedded Human liver cancer tissue using ml120526(SDCCAG3 Antibody) at dilution 1/30, on the right is treated with fusion protein. (Original magnification: $\times 200$)

Predicted cell location: Cytoplasm
Positive control: Human brain
Recommended dilution: 50-200



The image on the left is immunohistochemistry of paraffin-embedded Human brain tissue using ml120526(SDCCAG3 Antibody) at dilution 1/30, on the right is treated with fusion protein. (Original magnification: $\times 200$)

Western blotting

Predicted band size: 48 kDa
Positive control: Human prostate tissue
Recommended dilution: 500-2000

Gel: 8%SDS-PAGE

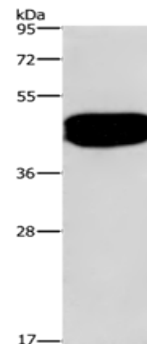
Lysate: 40 μ g

Lane: Human prostate tissue

Primary antibody: ml120526(SDCCAG3 Antibody) at dilution 1/500

Secondary antibody: Goat anti rabbit IgG at 1/8000 dilution

Exposure time: 20 seconds



ELISA

Recommended dilution: 2000-5000

联系电话: 4008-898-798, 021-61725725

联系QQ: 2881505695, 2881505696

邮箱: mlbio_cn@yeah.net

网址: www.mlbio.cn