

Anti-FADD antibody

Cat. No.	ml120622
Package	25 µl/100 µl/200 µl
Storage	-20°C, pH7.4 PBS, 0.05% NaN ₃ , 40% Glycerol

Product overview

Description	Anti-FADD rabbit polyclonal antibody
Applications	ELISA, WB, IHC
Immunogen	Fusion protein of human FADD
Reactivity	Human, Mouse
Content	0.5 mg/ml
Host species	Rabbit
Ig class	Immunogen-specific rabbit IgG
Purification	Antigen affinity purification

Target information

Symbol	FADD
Full name	Fas (TNFRSF6)-associated via death domain
Synonyms	GIG3, MORT1
Swissprot	Q13158

Target Background

The protein encoded by this gene is an adaptor molecule that interacts with various cell surface receptors and mediates cell apoptotic signals. Through its C-terminal death domain, this protein can be recruited by TNFRSF6/Fas-receptor, tumor necrosis factor receptor, TNFRSF25, and TNFSF10/TRAIL-receptor, and thus it participates in the death signaling initiated by these receptors. Interaction of this protein with the receptors unmasks the N-terminal effector domain of this protein, which allows it to recruit caspase-8, and thereby activate the cysteine protease cascade. Knockout studies in mice also suggest the importance of this protein in early T cell development.

订购热线: 4008-898-798

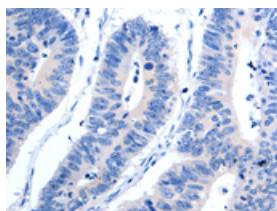
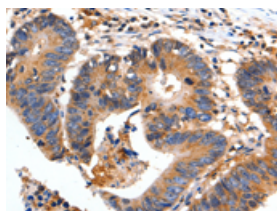
Applications

Immunohistochemistry

Predicted cell location: Cytoplasm

Positive control: Human colon cancer

Recommended dilution: 50-100

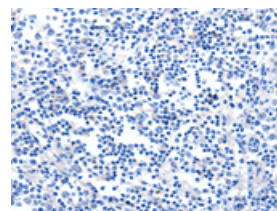
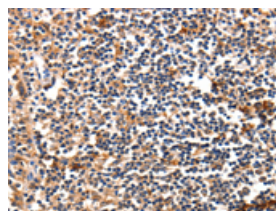


The image on the left is immunohistochemistry of paraffin-embedded Human colon cancer tissue using ml120622(FADD Antibody) at dilution 1/35, on the right is treated with fusion protein. (Original magnification: $\times 200$)

Predicted cell location: Cytoplasm

Positive control: Human tonsil

Recommended dilution: 50-100



The image on the left is immunohistochemistry of paraffin-embedded Human tonsil tissue using ml120622(FADD Antibody) at dilution 1/35, on the right is treated with fusion protein. (Original magnification: $\times 200$)

Western blotting

Predicted band size: 23 kDa

Positive control: Mouse spleen tissue and RAW264.7 cells

Recommended dilution: 1000-5000

Gel: 8+12% SDS-PAGE

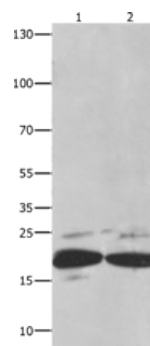
Lysate: 30 μ g

Lane 1-2: Mouse spleen tissue, RAW264.7 cells

Primary antibody: ml120622(FADD Antibody) at dilution 1/550

Secondary antibody: Goat anti rabbit IgG at 1/8000 dilution

Exposure time: 5 seconds



ELISA

Recommended dilution: 2000-10000

联系电话: 4008-898-798, 021-61725725

联系QQ: 2881505695, 2881505696

邮箱: mlbio_cn@yeah.net

网址: www.mlbio.cn