

Anti-FOXR2 antibody

Cat. No.	ml120635
Package	25 µl/100 µl/200 µl
Storage	-20°C, pH7.4 PBS, 0.05% NaN ₃ , 40% Glycerol

Product overview

Description	Anti-FOXR2 rabbit polyclonal antibody
Applications	ELISA, WB, IHC
Immunogen	Full length fusion protein
Reactivity	Human
Content	0.3 mg/ml
Host species	Rabbit
Ig class	Immunogen-specific rabbit IgG
Purification	Antigen affinity purification

Target information

Symbol	FOXR2
Full name	forkhead box R2
Synonyms	FOXN6
Swissprot	Q6PJQ5

Target Background

FOXR2 (Forkhead box protein R2), also known as FOXN6 (Forkhead box protein N6), is a 311 amino acid nuclear protein that belongs to the FOX family and contains one fork-head DNA-binding domain. Like other members of the FOX family, FOXR2 is not abundantly expressed in normal tissues but is found at very high levels in breast cancer and primary cancer cell lines and is thought to act as a transcription factor.

订购热线: 4008-898-798

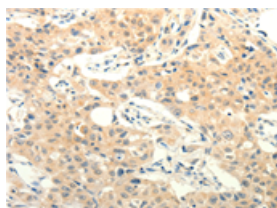
Applications

Immunohistochemistry

Predicted cell location: Cytoplasm

Positive control: Human lung cancer

Recommended dilution: 25-100

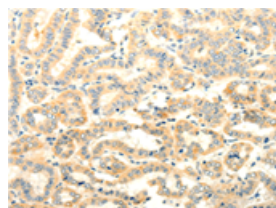


The image on the left is immunohistochemistry of paraffin-embedded Human lung cancer tissue using ml120635(FOXR2 Antibody) at dilution 1/25, on the right is treated with fusion protein. (Original magnification: $\times 200$)

Predicted cell location: Cytoplasm

Positive control: Human thyroid cancer

Recommended dilution: 25-100



The image on the left is immunohistochemistry of paraffin-embedded Human thyroid cancer tissue using ml120635(FOXR2 Antibody) at dilution 1/25, on the right is treated with fusion protein. (Original magnification: $\times 200$)

Western blotting

Predicted band size: 36 kDa

Positive control: Raji cell

Recommended dilution: 200-1000

Gel: 8%SDS-PAGE

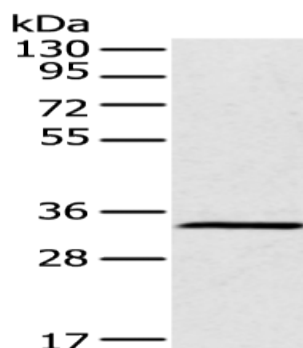
Lysate: 40 μ g

Lane: Raji cell

Primary antibody: ml120635(FOXR2 Antibody) at dilution 1/200

Secondary antibody: Goat anti rabbit IgG at 1/8000 dilution

Exposure time: 2 minutes



ELISA

Recommended dilution: 1000-2000

联系电话: 4008-898-798, 021-61725725

联系QQ: 2881505695, 2881505696

邮箱: mlbio_cn@yeah.net

网址: www.mlbio.cn