

Anti-UGCG antibody

Cat. No.	ml120685
Package	25 µl/100 µl/200 µl
Storage	-20°C, pH7.4 PBS, 0.05% NaN ₃ , 40% Glycerol

Product overview

Description	Anti-UGCG rabbit polyclonal antibody
Applications	ELISA, WB, IHC
Immunogen	Fusion protein of human UGCG
Reactivity	Human, Mouse, Rat
Content	0.7 mg/ml
Host species	Rabbit
Ig class	Immunogen-specific rabbit IgG
Purification	Antigen affinity purification

Target information

Symbol	UGCG
Full name	UDP-glucose ceramide glucosyltransferase
Synonyms	GCS; GLCT1
Swissprot	Q16739

Target Background

Glycosphingolipids (GSLs) are a group of membrane components that contain lipid and sugar moieties. They are present in essentially all animal cells and are believed to have important roles in various cellular processes. UDP-glucose ceramide glucosyltransferase catalyzes the first glycosylation step in glycosphingolipid biosynthesis. The product, glucosylceramide, is the core structure of more than 300 GSLs. UGCG is widely expressed and transcription is upregulated during keratinocyte differentiation.

订购热线: 4008-898-798

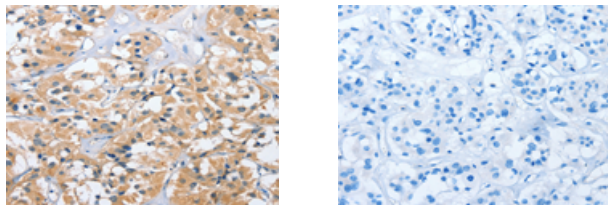
Applications

Immunohistochemistry

Predicted cell location: Cytoplasm

Positive control: Human thyroid cancer

Recommended dilution: 25-100



The image on the left is immunohistochemistry of paraffin-embedded Human thyroid cancer tissue using ml120685(UGCG Antibody) at dilution 1/40, on the right is treated with fusion protein. (Original magnification: $\times 200$)

Western blotting

Predicted band size: 45 kDa

Positive control: A431 cells

Recommended dilution: 500-2000

Gel: 10% SDS-PAGE

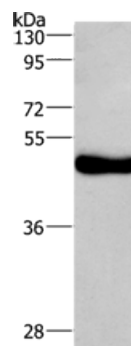
Lysate: 40 μ g

Lane: A431 cells

Primary antibody: ml120685(UGCG Antibody) at dilution 1/800

Secondary antibody: Goat anti rabbit IgG at 1/8000 dilution

Exposure time: 1 minute



ELISA

Recommended dilution: 2000-5000

联系电话: 4008-898-798, 021-61725725

联系QQ: 2881505695, 2881505696

邮箱: mlbio_cn@yeah.net

网址: www.mlbio.cn