

Anti-TRAP1 antibody

Cat. No.	ml120795
Package	25 µl/100 µl/200 µl
Storage	-20°C, pH7.4 PBS, 0.05% NaN ₃ , 40% Glycerol

Product overview

Description	Anti-TRAP1 rabbit polyclonal antibody
Applications	ELISA, WB, IHC
Immunogen	Fusion protein of human TRAP1
Reactivity	Human, Mouse, Rat
Content	1.1 mg/ml
Host species	Rabbit
Ig class	Immunogen-specific rabbit IgG
Purification	Antigen affinity purification

Target information

Symbol	TRAP1
Full name	TNF receptor-associated protein 1
Synonyms	HSP75, HSP90L
Swissprot	Q12931

Target Background

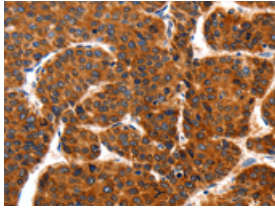
HSP90 proteins are highly conserved molecular chaperones that have key roles in signal transduction, protein folding, protein degradation, and morphologic evolution. HSP90 proteins normally associate with other cochaperones and play important roles in folding newly synthesized proteins or stabilizing and refolding denatured proteins after stress. TRAP1 is a mitochondrial HSP90 protein. Other HSP90 proteins are found in cytosol and endoplasmic reticulum

订购热线: 4008-898-798

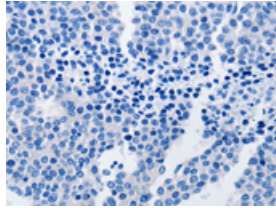
Applications

Immunohistochemistry

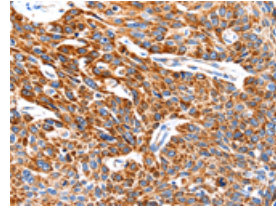
Predicted cell location: Cytoplasm
Positive control: Human liver cancer
Recommended dilution: 100-200



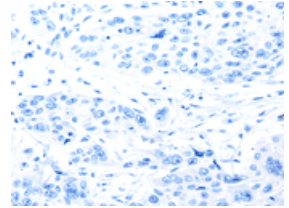
The image on the left is immunohistochemistry of paraffin-embedded Human liver cancer tissue using ml120795(TRAP1 Antibody) at dilution 1/100, on the right is treated with fusion protein. (Original magnification: $\times 200$)



Predicted cell location: Cytoplasm
Positive control: Human esophagus cancer
Recommended dilution: 100-200



The image on the left is immunohistochemistry of paraffin-embedded Human esophagus cancer tissue using ml120795(TRAP1 Antibody) at dilution 1/100, on the right is treated with fusion protein. (Original magnification: $\times 200$)



Western blotting

Predicted band size: 80 kDa
Positive control: Mouse kidney tissue, 293T and hela cells
Recommended dilution: 1000-5000

Gel: 10% SDS-PAGE

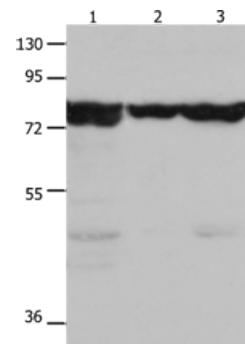
Lysate: 30 μ g

Lane 1-3: Mouse kidney tissue, 293T cells, hela cells

Primary antibody: ml120795(TRAP1 Antibody) at dilution 1/1500

Secondary antibody: Goat anti rabbit IgG at 1/8000 dilution

Exposure time: 20 seconds



ELISA

Recommended dilution: 2000-10000

联系电话: 4008-898-798, 021-61725725

联系QQ: 2881505695, 2881505696

邮箱: mlbio_cn@yeah.net

网址: www.mlbio.cn