

## Anti-COX16 antibody

|                 |   |
|-----------------|---|
| <b>Cat. No.</b> | ml120110  |
| <b>Package</b>  | 25 µl/100 µl/200 µl                                     |
| <b>Storage</b>  | -20°C, pH7.4 PBS, 0.05% NaN <sub>3</sub> , 40% Glycerol |

### Product overview

|                     |                                       |
|---------------------|---------------------------------------|
| <b>Description</b>  | Anti-COX16 rabbit polyclonal antibody |
| <b>Applications</b> | ELISA, IHC                            |
| <b>Immunogen</b>    | Fusion protein of human COX16         |
| <b>Reactivity</b>   | Human, Mouse                          |
| <b>Content</b>      | 0.6 mg/ml                             |
| <b>Host species</b> | Rabbit                                |
| <b>Ig class</b>     | Immunogen-specific rabbit IgG         |
| <b>Purification</b> | Antigen affinity purification         |

### Target information

|                  |   |
|------------------|---|
| <b>Symbol</b>    | COX16   |
| <b>Full name</b> | COX16 cytochrome c oxidase assembly homolog (S. cerevisiae) |
| <b>Synonyms</b>  | HSPC203, C14orf112  |
| <b>Swissprot</b> | Q9P0S2  |

### Target Background

This protein is encoded by COX16, corresponding to the previously uncharacterized open reading frame YJL003w of the yeast genome. COX16 was identified in studies of COX-deficient mutants previously assigned to complementation group G22 of a collection of yeast pet mutants. To determine its location, Cox16p was tagged with a Myc epitope at the C terminus.

订购热线: 4008-898-798

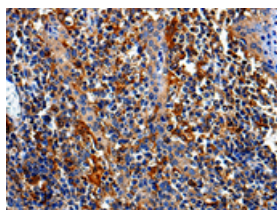
## Applications

### Immunohistochemistry

Predicted cell location: Cytoplasm, Cell membrane

Positive control: Human tonsil

Recommended dilution: 25-100

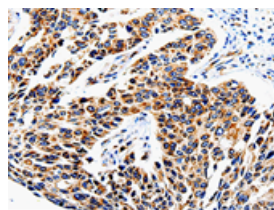


The image is immunohistochemistry of paraffin-embedded Human tonsil tissue using ml120110(COX16 Antibody) at dilution 1/50.  
(Original magnification: ×200)

Predicted cell location: Cytoplasm, Cell membrane

Positive control: Human lung cancer

Recommended dilution: 25-100



The image is immunohistochemistry of paraffin-embedded Human lung cancer tissue using ml120110(COX16 Antibody) at dilution 1/50.  
(Original magnification: ×200)

### ELISA

Recommended dilution: 500-5000

联系电话: 4008-898-798, 021-61725725

联系QQ: 2881505695, 2881505696

邮箱: [mlbio\\_cn@yeah.net](mailto:mlbio_cn@yeah.net)

网址: [www.mlbio.cn](http://www.mlbio.cn)