

Anti-IMMT antibody

Cat. No.	ml120856
Package	25 µl/100 µl/200 µl
Storage	-20°C, pH7.4 PBS, 0.05% NaN ₃ , 40% Glycerol

Product overview

Description	Anti-IMMT rabbit polyclonal antibody
Applications	ELISA, WB, IHC
Immunogen	Fusion protein of human IMMT
Reactivity	Human, Mouse
Content	0.6 mg/ml
Host species	Rabbit
Ig class	Immunogen-specific rabbit IgG
Purification	Antigen affinity purification

Target information

Symbol	IMMT
Full name	inner membrane protein, mitochondrial
Synonyms	HMP, P87, P89, PIG4, PIG52, MINOS2, P87/89
Swissprot	Q16891

Target Background

Mitochondrial inner membrane protein is a protein that in humans is encoded by the IMMT gene. IMMT has been shown to interact with BAT2. The mitochondrial inner membrane (IM) serves as the site for ATP production by hosting the oxidative phosphorylation complex machinery most notably on the crista membranes. Disruption of the crista structure has been implicated in a variety of cardiovascular and neurodegenerative diseases.

订购热线: 4008-898-798

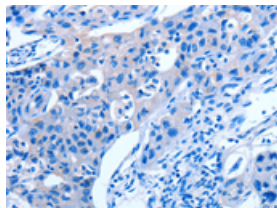
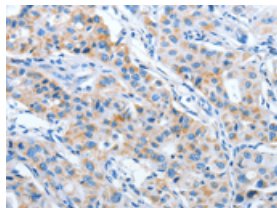
Applications

Immunohistochemistry

Predicted cell location: Cytoplasm

Positive control: Human lung cancer

Recommended dilution: 50-200

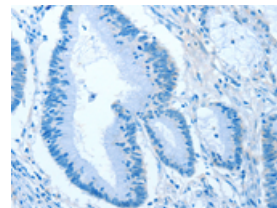
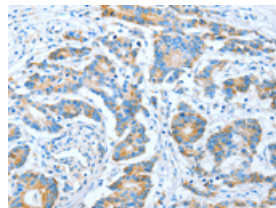


The image on the left is immunohistochemistry of paraffin-embedded Human lung cancer tissue using ml120856(IMMT Antibody) at dilution 1/70, on the right is treated with fusion protein. (Original magnification: $\times 200$)

Predicted cell location: Cytoplasm

Positive control: Human colon cancer

Recommended dilution: 50-200



The image on the left is immunohistochemistry of paraffin-embedded Human colon cancer tissue using ml120856(IMMT Antibody) at dilution 1/70, on the right is treated with fusion protein. (Original magnification: $\times 200$)

Western blotting

Predicted band size: 84 kDa

Positive control: Raji and 231 cells, HepG2, Hela and 293T cells

Recommended dilution: 500-2000

Gel: 6%SDS-PAGE

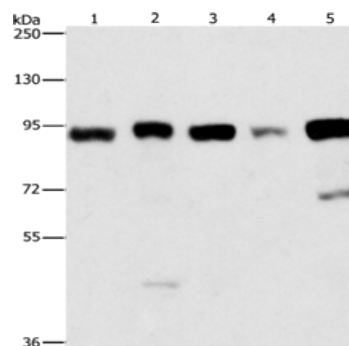
Lysate: 40 μ g

Lane 1-5: Raji cells, 231 cells, HepG2 cells, Hela cells, 293T cells

Primary antibody: ml120856(IMMT Antibody) at dilution 1/270

Secondary antibody: Goat anti rabbit IgG at 1/8000 dilution

Exposure time: 5 seconds



ELISA

Recommended dilution: 2000-5000

联系电话: 4008-898-798, 021-61725725

联系QQ: 2881505695, 2881505696

邮箱: mlbio_cn@yeah.net

网址: www.mlbio.cn