

Anti-INHBC antibody

Cat. No.	ml120862
Package	25 µl/100 µl/200 µl
Storage	-20°C, pH7.4 PBS, 0.05% NaN ₃ , 40% Glycerol

Product overview

Description	Anti-INHBC rabbit polyclonal antibody
Applications	ELISA, WB, IHC
Immunogen	Fusion protein of human INHBC
Reactivity	Human, Mouse, Rat
Content	0.5 mg/ml
Host species	Rabbit
Ig class	Immunogen-specific rabbit IgG
Purification	Antigen affinity purification

Target information

Symbol	INHBC
Full name	inhibin, beta C
Synonyms	IHBC
Swissprot	P55103

Target Background

This gene encodes the beta C chain of inhibin, a member of the TGF-beta superfamily. This subunit forms heterodimers with beta A and beta B subunits. Inhibins and activins, also members of the TGF-beta superfamily, are hormones with opposing actions and are involved in hypothalamic, pituitary, and gonadal hormone secretion, as well as growth and differentiation of various cell types.

订购热线: 4008-898-798

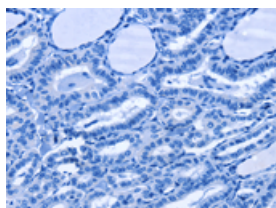
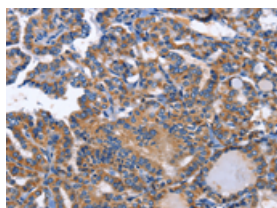
Applications

Immunohistochemistry

Predicted cell location: Cytoplasm

Positive control: Human thyroid cancer

Recommended dilution: 50-200

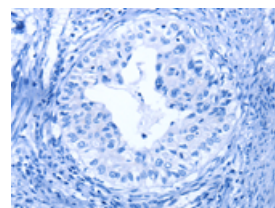
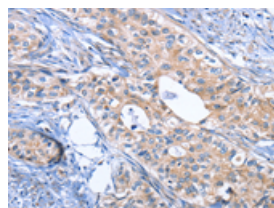


The image on the left is immunohistochemistry of paraffin-embedded Human thyroid cancer tissue using ml120862(INHBC Antibody) at dilution 1/50, on the right is treated with fusion protein. (Original magnification: $\times 200$)

Predicted cell location: Cytoplasm

Positive control: Human cervical cancer

Recommended dilution: 50-200



The image on the left is immunohistochemistry of paraffin-embedded Human cervical cancer tissue using ml120862(INHBC Antibody) at dilution 1/50, on the right is treated with fusion protein. (Original magnification: $\times 200$)

Western blotting

Predicted band size: 38 kDa

Positive control: 293T, hepG2, hela and A549 cells

Recommended dilution: 500-2000

Gel: 10% SDS-PAGE

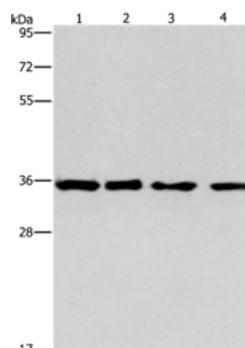
Lysate: 40 μ g

Lane 1-4: 293T cells, hepG2 cells, hela cells, A549 cells

Primary antibody: ml120862(INHBC Antibody) at dilution 1/550

Secondary antibody: Goat anti rabbit IgG at 1/8000 dilution

Exposure time: 1 minute



ELISA

Recommended dilution: 1000-5000

联系电话: 4008-898-798, 021-61725725

联系QQ: 2881505695, 2881505696

邮箱: mlbio_cn@yeah.net

网址: www.mlbio.cn