

Anti-TONSL antibody

Cat. No.	ml120140
Package	25 µl/100 µl/200 µl
Storage	-20°C, pH7.4 PBS, 0.05% NaN ₃ , 40% Glycerol

Product overview

Description	Anti-TONSL rabbit polyclonal antibody
Applications	ELISA, IHC
Immunogen	Fusion protein of human TONSL
Reactivity	Human
Content	0.6 mg/ml
Host species	Rabbit
Ig class	Immunogen-specific rabbit IgG
Purification	Antigen affinity purification

Target information

Symbol	TONSL
Full name	tonsoku-like, DNA repair protein
Synonyms	IKBR; NFKBIL2
Swissprot	Q96HA7

Target Background

The protein encoded by this gene is thought to be a negative regulator of NF-kappa-B mediated transcription. The encoded protein may bind NF-kappa-B complexes and trap them in the cytoplasm, preventing them from entering the nucleus and interacting with the DNA. Phosphorylation of this protein targets it for degradation by the ubiquitination pathway, which frees the NF-kappa-B complexes to enter the nucleus.

订购热线: 4008-898-798

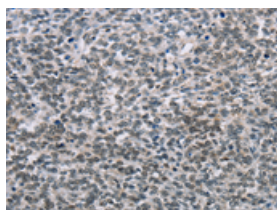
Applications

Immunohistochemistry

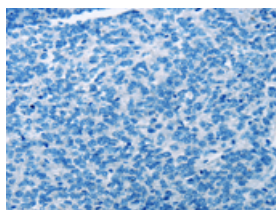
Predicted cell location: Nucleus

Positive control: Human ovarian cancer

Recommended dilution: 100-300



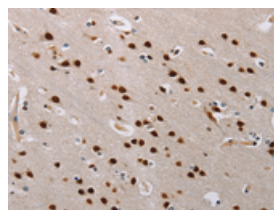
The image on the left is immunohistochemistry of paraffin-embedded Human ovarian cancer tissue using ml120140(TONSL Antibody) at dilution 1/60, on the right is treated with fusion protein. (Original magnification: $\times 200$)



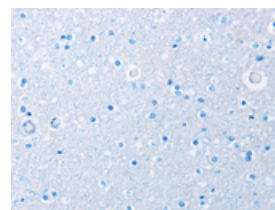
Predicted cell location: Nucleus

Positive control: Human brain

Recommended dilution: 100-300



The image on the left is immunohistochemistry of paraffin-embedded Human brain tissue using ml120140(TONSL Antibody) at dilution 1/60, on the right is treated with fusion protein. (Original magnification: $\times 200$)



ELISA

Recommended dilution: 1000-5000

联系电话: 4008-898-798, 021-61725725

联系QQ: 2881505695, 2881505696

邮箱: mlbio_cn@yeah.net

网址: www.mlbio.cn