

Anti-MVP antibody

Cat. No.	ml120930
Package	25 µl/100 µl/200 µl
Storage	-20°C, pH7.4 PBS, 0.05% NaN ₃ , 40% Glycerol

Product overview

Description	Anti-MVP rabbit polyclonal antibody
Applications	ELISA, WB, IHC
Immunogen	Fusion protein of human MVP
Reactivity	Human, Mouse, Rat
Content	0.3 mg/ml
Host species	Rabbit
Ig class	Immunogen-specific rabbit IgG
Purification	Antigen affinity purification

Target information

Symbol	MVP
Full name	major vault protein
Synonyms	LRP, VAULT1
Swissprot	Q14764

Target Background

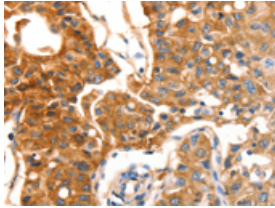
This gene encodes the major component of the vault complex. Vaults are multi-subunit ribonucleoprotein structures that may be involved in nucleo-cytoplasmic transport. The encoded protein may play a role in multiple cellular processes by regulating the MAP kinase, JAK/STAT and phosphoinositide 3-kinase/Akt signaling pathways. The encoded protein also plays a role in multidrug resistance, and expression of this gene may be a prognostic marker for several types of cancer. Alternatively spliced transcript variants have been observed for this gene.

订购热线: 4008-898-798

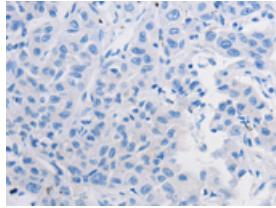
Applications

Immunohistochemistry

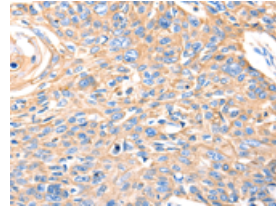
Predicted cell location: Cytoplasm
Positive control: Human lung cancer
Recommended dilution: 50-200



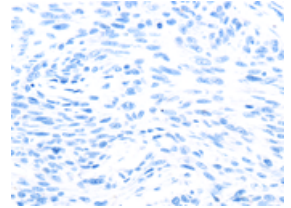
The image on the left is immunohistochemistry of paraffin-embedded Human lung cancer tissue using ml120930(MVP Antibody) at dilution 1/30, on the right is treated with fusion protein. (Original magnification: $\times 200$)



Predicted cell location: Cytoplasm
Positive control: Human esophagus cancer
Recommended dilution: 50-200



The image on the left is immunohistochemistry of paraffin-embedded Human esophagus cancer tissue using ml120930(MVP Antibody) at dilution 1/30, on the right is treated with fusion protein. (Original magnification: $\times 200$)



Western blotting

Predicted band size: 99 kDa
Positive control: 823 cells
Recommended dilution: 500-2000

Gel: 8%SDS-PAGE

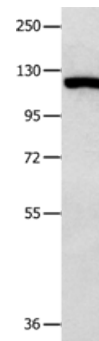
Lysate: 50 μ g

Lane: 823 cells

Primary antibody: ml120930(MVP Antibody) at dilution 1/350

Secondary antibody: Goat anti rabbit IgG at 1/8000 dilution

Exposure time: 1 second



ELISA

Recommended dilution: 2000-5000

联系电话: 4008-898-798, 021-61725725

联系QQ: 2881505695, 2881505696

邮箱: mlbio_cn@yeah.net

网址: www.mlbio.cn