

Anti-MSN antibody

Cat. No.	ml120995
Package	25 µl/100 µl/200 µl
Storage	-20°C, pH7.4 PBS, 0.05% NaN ₃ , 40% Glycerol

Product overview

Description	Anti-MSN rabbit polyclonal antibody
Applications	ELISA, WB, IHC
Immunogen	Fusion protein of human MSN
Reactivity	Human, Mouse, Rat
Content	0.2 mg/ml
Host species	Rabbit
Ig class	Immunogen-specific rabbit IgG
Purification	Antigen affinity purification

Target information

Symbol	MSN
Full name	moesin
Synonyms	HEL70
Swissprot	P26038

Target Background

Moesin (for membrane-organizing extension spike protein) is a member of the ERM family which includes ezrin and radixin. ERM proteins appear to function as cross-linkers between plasma membranes and actin-based cytoskeletons. Moesin is localized to filopodia and other membranous protrusions that are important for cell-cell recognition and signaling and for cell movement. Probably involved in connections of major cytoskeletal structures to the plasma membrane. May inhibit herpes simplex virus 1 infection at an early stage.

订购热线: 4008-898-798

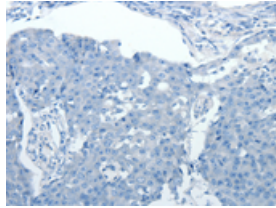
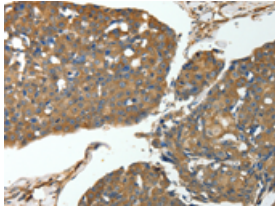
Applications

Immunohistochemistry

Predicted cell location: Cytoplasm

Positive control: Human breast cancer

Recommended dilution: 50-200

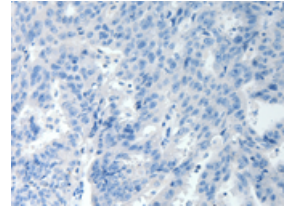
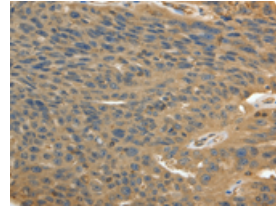


The image on the left is immunohistochemistry of paraffin-embedded Human breast cancer tissue using ml120995(MSN Antibody) at dilution 1/30, on the right is treated with fusion protein. (Original magnification: $\times 200$)

Predicted cell location: Cytoplasm

Positive control: Human ovarian cancer

Recommended dilution: 50-200



The image on the left is immunohistochemistry of paraffin-embedded Human ovarian cancer tissue using ml120995(MSN Antibody) at dilution 1/30, on the right is treated with fusion protein. (Original magnification: $\times 200$)

Western blotting

Predicted band size: 68 kDa

Positive control: 293T and A431 cells

Recommended dilution: 500-2000

Gel: 10% SDS-PAGE

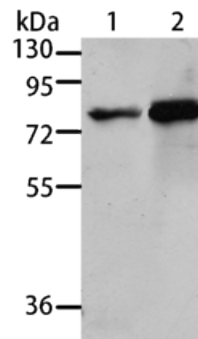
Lysate: 40 μ g

Lane 1-2: 293T cells, A431 cells

Primary antibody: ml120995(MSN Antibody) at dilution 1/500

Secondary antibody: Goat anti rabbit IgG at 1/8000 dilution

Exposure time: 1 minute



ELISA

Recommended dilution: 2000-5000

联系电话: 4008-898-798, 021-61725725

联系QQ: 2881505695, 2881505696

邮箱: mlbio_cn@yeah.net

网址: www.mlbio.cn